

SET antibody

Catalog Number: 115219

Product name

SET antibody

Specificity

Human, Mouse, Rat; other species not tested.

Antibody description

SET Rabbit Polyclonal antibody. Positive IHC detected in human liver cancer tissue, human gliomas tissue, human kidney tissue. Positive WB detected in HeLa cells, HEK-293 cells. Observed molecular weight by Western-blot: 33-37 kDa

Preparation

This antibody was obtained by immunization of Peptide (Accession Number: NM_003011). Purification method: Antigen affinity purified.

Formulation

PBS with 0.02% sodium azide and 50% glycerol pH 7.3.

Storage

Store at -20°C. DO NOT ALIQUOT

Clonality

Polyclonal

Ig Type

Rabbit IgG

Applications

ELISA, WB, IHC

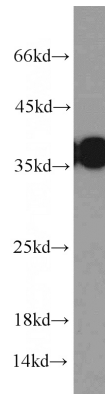
Dilutions

Recommended Dilution:

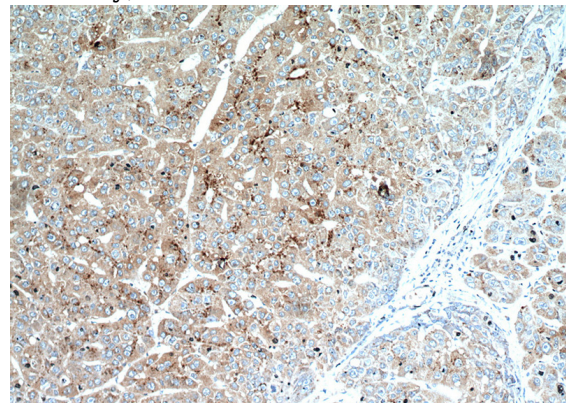
WB: 1:500-1:5000

IHC: 1:20-1:200

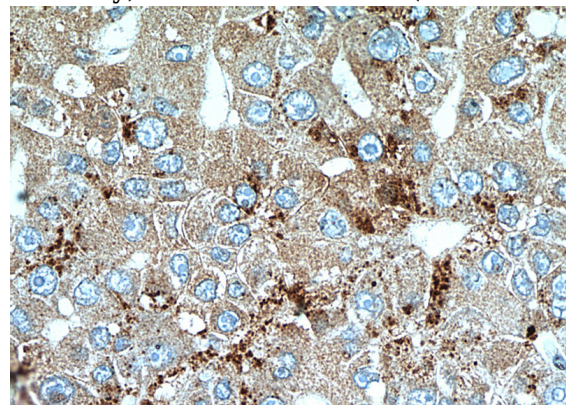
Validations



HeLa cells were subjected to SDS PAGE followed by western blot with Catalog No:115219(SET antibody) at dilution of 1:1000



Immunohistochemical of paraffin-embedded human liver cancer using Catalog No:115219(SET antibody) at dilution of 1:100 (under 10x lens)



Immunohistochemical of paraffin-embedded human liver cancer using Catalog No:115219(SET antibody) at dilution of 1:100 (under 40x lens)