

Anti-POU4F1 antibody



Catalog Number: 175219

Product name

Anti-POU4F1 antibody

IHC-P:1:400-800

FC:1ug/test

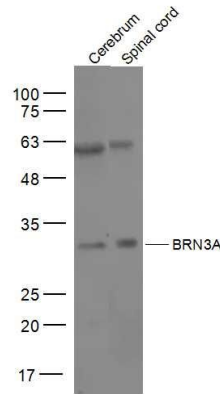
Specificity

Human, Mouse, Rat, Chicken, Dog, Pig, Cow, Rabbit

Validations

Antibody description

Rabbit polyclonal antibody to POU4F1



Preparation

This antigen of this antibody was klh conjugated synthetic peptide derived from human brn3a 325-419/419

Fig1: Sample:; Cerebrum (Mouse) Lysate at 40 ug; Spinal cord (Mouse) Lysate at 40 ug; Primary: Anti-BRN3A at 1/500 dilution; Secondary: IRDye800CW Goat Anti-Rabbit IgG at 1/20000 dilution; Predicted band size: 43 kD; Observed

Formulation

Liquid, 0.01M TBS(pH7.4) with 1% BSA, 0.03% Proclin300 and 50% Glycerol.

Storage

Store at -20°C for one year. Avoid repeated freeze/thaw cycles. The lyophilized antibody is stable at room temperature for at least one month and for greater than a year when kept at -20°C. When reconstituted in sterile pH 7.4 0.01M PBS or diluent of antibody the antibody is stable for at least two weeks at 2-4°C.

Clonality

Polyclonal

Ig Type

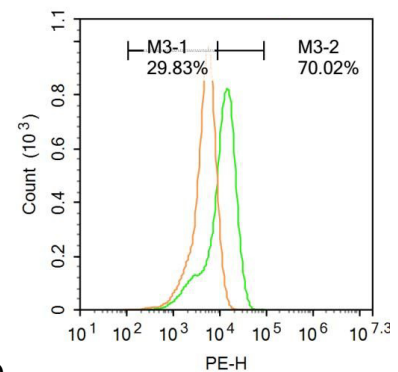
Rabbit IgG

Applications

WB, IHC-P, FC

Dilutions

WB:1:500-2000



band size: 33 kD

Fig2: U-937 cells were fixed with 4% PFA for 10min at room temperature, permeabilized with 90% ice-cold methanol for 20 min at room temperature, and incubated in 5% BSA blocking buffer for 30 min at room temperature. Cells were then stained with BRN3A Antibody at 1:500 dilution in blocking buffer and incubated for 30 min at room temperature, washed twice with 2%BSA in PBS, followed by secondary antibody incubation for 40 min at room temperature. Acquisitions of 20,000 events were performed. Cells stained with primary antibody (green), and isotype control (orange).