

NPM3 antibody

Catalog Number: 113219

Product name

NPM3 antibody

IP: 1:200-1:2000

IHC: 1:20-1:200

Specificity

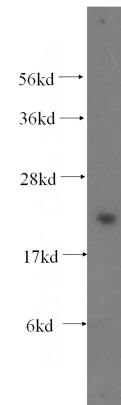
Human, Mouse, Rat; other species not tested.

IF: 1:20-1:200

Antibody description

NPM3 Rabbit Polyclonal antibody. Positive IHC detected in human lymphoma tissue. Positive IF detected in HeLa cells. Positive WB detected in HeLa cells. Positive IP detected in HeLa cells. Observed molecular weight by Western-blot: 25 kDa

Validations



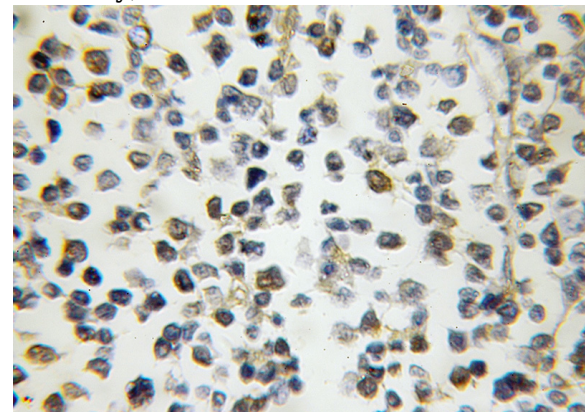
Preparation

This antibody was obtained by immunization of NPM3 recombinant protein (Accession Number: NM_006993). Purification method: Antigen affinity purified.

HeLa cells were subjected to SDS PAGE followed by western blot with Catalog No:113219(NPM3 antibody) at dilution of 1:500

Formulation

PBS with 0.1% sodium azide and 50% glycerol pH 7.3.



Storage

Store at -20°C. DO NOT ALIQUOT

Clonality

Polyclonal

Ig Type

Rabbit IgG

Applications

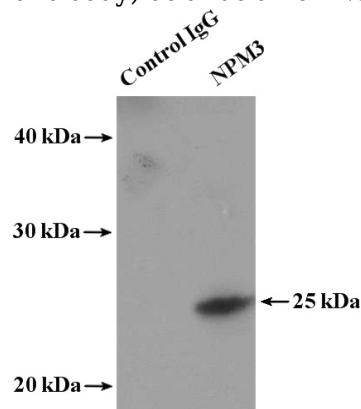
ELISA, WB, IHC, IF, IP

Dilutions

Recommended Dilution:

WB: 1:200-1:2000

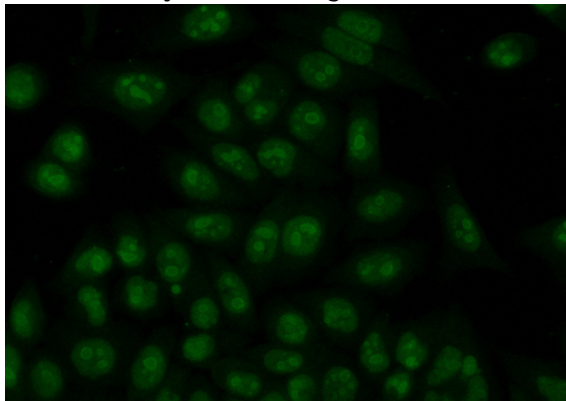
Immunohistochemical of paraffin-embedded human lymphoma using Catalog No:113219(NPM3 antibody) at dilution of 1:50 (under 10x lens)



NPM3 antibody

Catalog Number: 113219

IP Result of anti-NPM3 (IP:Catalog No:113219, 4ug; Detection:Catalog No:113219 1:500) with HeLa cells lysate 3400ug.



Immunofluorescent analysis of (10% Formaldehyde) fixed HeLa cells using Catalog No:113219(NPM3 Antibody) at dilution of 1:50 and Alexa Fluor 488-conjugated AffiniPure Goat Anti-Rabbit IgG(H+L)