

# Growth hormone antibody



Catalog Number: 111219

## Product name

Growth hormone antibody

## Specificity

Human; other species not tested.

## Antibody description

Growth hormone Rabbit Polyclonal antibody.  
Positive WB detected in human placenta tissue.  
Positive IHC detected in human pituitary adenoma tissue. Observed molecular weight by Western-blot: 23 kDa

## Preparation

This antibody was obtained by immunization of Peptide (Accession Number: NM\_000515).  
Purification method: Antigen affinity purified.

## Formulation

PBS with 0.02% sodium azide and 50% glycerol  
pH 7.3.

## Storage

Store at -20°C. DO NOT ALIQUOT

## Clonality

Polyclonal

## Ig Type

Rabbit IgG

## Applications

ELISA, WB, IHC

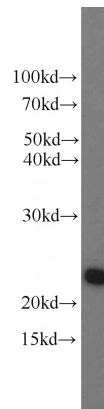
## Dilutions

Recommended Dilution:

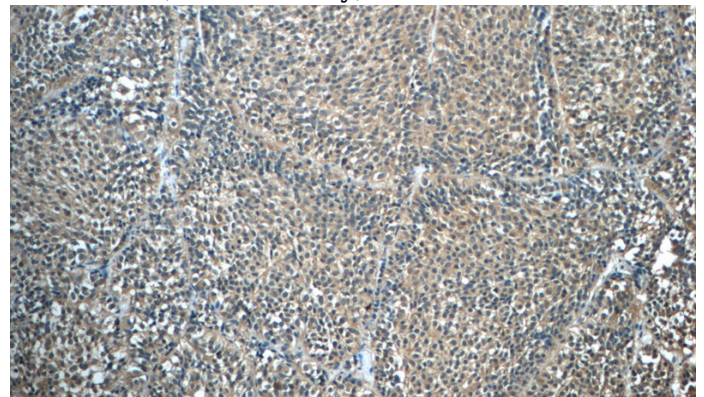
WB: 1:500-1:5000

IHC: 1:20-1:200

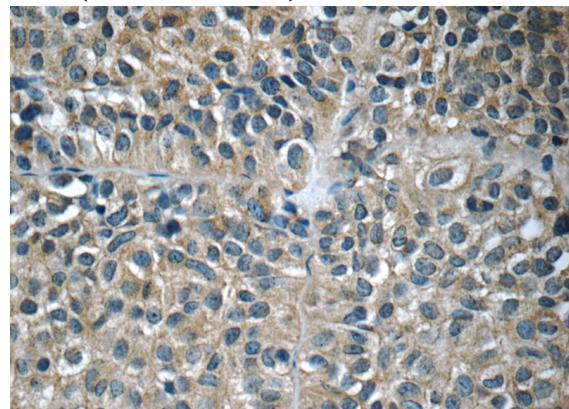
## Validations



human placenta tissue were subjected to SDS PAGE followed by western blot with Catalog No:111219(GH1 antibody) at dilution of 1:800



Immunohistochemistry of paraffin-embedded human pituitary adenoma tissue slide using Catalog No:111219(GH1 Antibody) at dilution of 1:50 (under 10x lens)



Immunohistochemistry of paraffin-embedded human pituitary adenoma tissue slide using Catalog No:111219(GH1 Antibody) at dilution of 1:50 (under 40x lens)