

DHODH antibody

Catalog Number: 109919

Product name

DHODH antibody

WB: 1:500-1:5000

IP: 1:500-1:5000

Specificity

Human, Mouse, Rat; other species not tested.

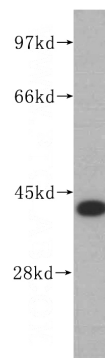
IHC: 1:20-1:200

IF: 1:20-1:200

Antibody description

DHODH Rabbit Polyclonal antibody. Positive IHC detected in human breast cancer tissue. Positive IF detected in MCF-7 cells. Positive IP detected in mouse spleen tissue. Positive WB detected in MCF7 cells, mouse ovary tissue, mouse spleen tissue, rat ovary tissue, rat spleen tissue. Observed molecular weight by Western-blot: 43kd

Validations



Preparation

This antibody was obtained by immunization of DHODH recombinant protein (Accession Number: NM_001361). Purification method: Antigen affinity purified.

MCF7 cells were subjected to SDS PAGE followed by western blot with Catalog No:109919(DHODH antibody) at dilution of 1:500

Formulation

PBS with 0.02% sodium azide and 50% glycerol pH 7.3.

Storage

Store at -20°C. DO NOT ALIQUOT

Clonality

Polyclonal

Ig Type

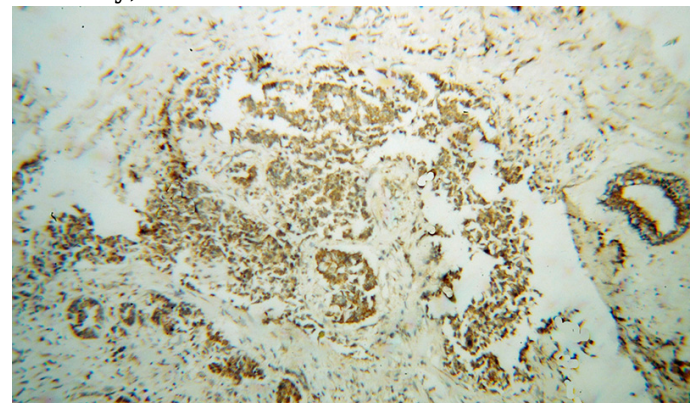
Rabbit IgG

Applications

ELISA, WB, IHC, IF, IP

Dilutions

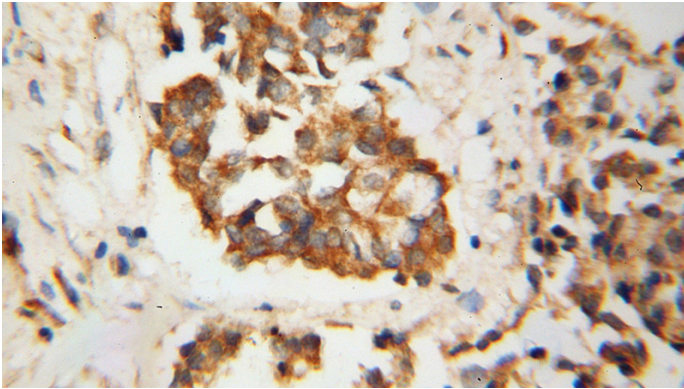
Recommended Dilution:



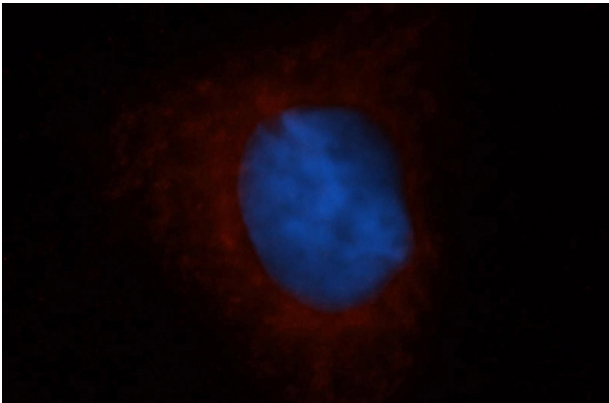
Immunohistochemical of paraffin-embedded human breast cancer using Catalog No:109919(DHODH antibody) at dilution of 1:100 (under 10x lens)

DHODH antibody

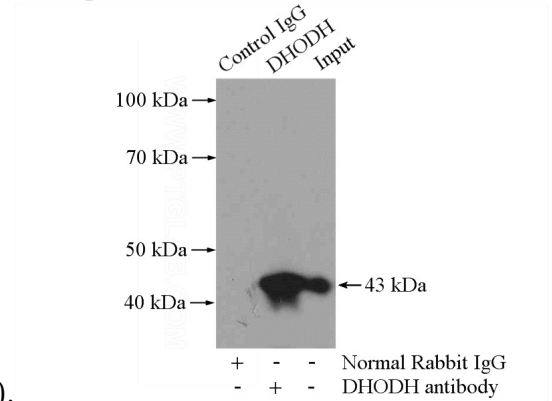
Catalog Number: 109919



Immunohistochemical of paraffin-embedded human breast cancer using Catalog No:109919(DHODH antibody) at dilution of 1:100 (under 40x lens)



Immunofluorescent analysis of MCF-7 cells, using DHODH antibody Catalog No:109919 at 1:50 dilution and Rhodamine-labeled goat anti-rabbit IgG (red). Blue pseudocolor = DAPI (fluorescent



DNA dye).

IP Result of anti-DHODH (IP:Catalog No:109919, 4ug; Detection:Catalog No:109919 1:1000) with mouse spleen tissue lysate 4000ug.