

Anti-IGF1 Receptor Rabbit antibody



Catalog Number: 167919

Product name

Rabbit IgG

Anti-IGF1 Receptor Rabbit antibody

Applications

Specificity

WB, ICC/IF, FC, IP

Human

Dilutions

Antibody description

WB: 1/1000

IGF1 Receptor Rabbit monoclonal antibody

ICC/IF: 1/20

Preparation

FC: 1/50

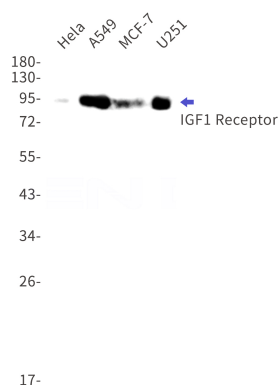
Antigen: Recombinant protein of human IGF1 Receptor

IP: 1/20

Formulation

50nM Tris-Glycine(pH 7.4), 0.15M NaCl, 40%Glycerol, 0.01% sodium azide and 0.05% BSA

Validations



Storage

Store at 4°C short term. Store at -20°C long term. Avoid freeze / thaw cycle.

Clonality

Monoclonal

Western blot detection of IGF1 Receptor in HeLa, A549, MCF-7, U251 cell lysates using IGF1 Receptor Rabbit mAb(1:1000 diluted). Predicted band size: 155kDa. Observed band size: 95kDa.

Ig Type