

Human MAP1D (His Tag) recombinant protein



Catalog Number: 500919

General Information

Gene Name Synonym

Methionyl aminopeptidase type 1D, mitochondrial; Peptidase M 1D

Protein Construction

A DNA sequence encoding the human MAP1D (NP_954697.1) (Arg 44-Ala 335) was expressed, with an initial Met at the N-terminus and a polyhistidine tag at the C-terminus.

Organism

Human

Expression Host

Baculovirus-Insect Cells

QC Testing

Activity

Measure by its ability to remove methionine from a fluorogenic peptide substrate H-Met-Gly-Pro-AMC, R&D Systems, Catalog#ES017. The resulting GP-AMC is cleaved by human DPPIV/CD26, R&D Systems, Catalog#1180SE. The specific activity is >30 pmoles/min/ μ g.

Purity

> 92 % as determined by SDS-PAGE

Endotoxin

< 1.0 EU per μ g of the protein as determined by the LAL method

Stability

Samples are stable for up to twelve months from date of receipt at -70°C

Predicted N terminal

Met

Molecular Mass

The secreted recombinant human MAP1D consists of 303 amino acids and predicts a molecular mass of 33.4 kDa. It migrates as an approximately 36 kDa band in SDS-PAGE under reducing conditions.

Formulation

Lyophilized from sterile 50mM Tris, 100mM NaCl, pH 8.0

1. 5 % trehalose and mannitol are added as protectants before lyophilization.

2. Please contact us for any concerns or special requirements.

Usage Guide

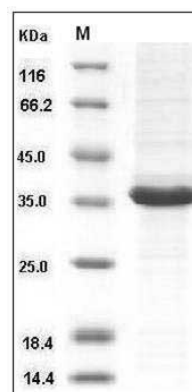
Storage

Store it under sterile conditions at -20°C to -80°C. It is recommended that the protein be aliquoted for optimal storage. Avoid repeated freeze-thaw cycles.

Reconstitution

Adding sterile water, prepare a stock solution of 0.25 mg/ml. Concentration is measured by UV-Vis.

SDS-PAGE



Human MAP1D / Methionine Aminopeptidase 1D Protein (His Tag) SDS-PAGE