

# AXL antibody

Catalog Number: 108519

## Product name

AXL antibody

## Specificity

Human; other species not tested.

## Antibody description

AXL Rabbit Polyclonal antibody. Positive FC detected in HeLa cells. Positive WB detected in HepG2 cells, HeLa cells, HT-1080 cells, human liver tissue. Positive IP detected in HepG2 cells. Observed molecular weight by Western-blot: 140 kDa

## Preparation

This antibody was obtained by immunization of AXL recombinant protein (Accession Number: NM\_021913). Purification method: Antigen affinity purified.

## Formulation

PBS with 0.02% sodium azide and 50% glycerol pH 7.3.

## Storage

Store at -20°C. DO NOT ALIQUOT

## Clonality

Polyclonal

## Ig Type

Rabbit IgG

## Applications

ELISA, WB, IP, FC

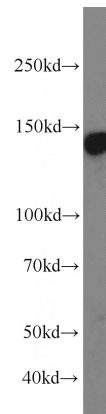
## Dilutions

Recommended Dilution:

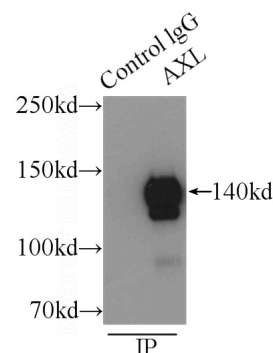
WB: 1:500-1:5000

IP: 1:500-1:5000

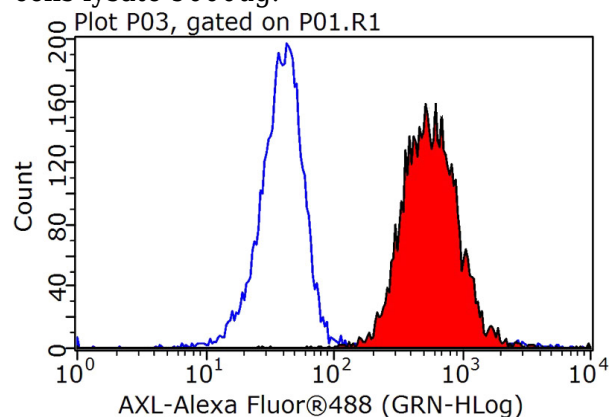
## Validations



HepG2 cells were subjected to SDS PAGE followed by western blot with Catalog No:117080(AXL antibody) at dilution of 1:1500



IP Result of anti-AXL (IP:Catalog No:117080, 5ug; Detection:Catalog No:117080 1:1000) with HepG2 cells lysate 9000ug.



1X10<sup>6</sup> HeLa cells were stained with 0.2ug AXL antibody (Catalog No:117080, red) and control antibody (blue). Fixed with 90% MeOH blocked

# AXL antibody



Catalog Number: 108519

---

with 3% BSA (30 min). Alexa Fluor 488-

conjugated AffiniPure Goat Anti-Rabbit IgG(H+L)  
with dilution 1:1000.