

METTL4 antibody

Catalog Number: 112519

Product name

METTL4 antibody

Specificity

Human, Mouse, Rat; other species not tested.

Antibody description

METTL4 Rabbit Polyclonal antibody. Positive IHC detected in human testis. Positive WB detected in HeLa cells, MCF7 cells. Observed molecular weight by Western-blot: 70kd

Preparation

This antibody was obtained by immunization of METTL4 recombinant protein (Accession Number: NM_022840). Purification method: Antigen affinity purified.

Formulation

PBS with 0.02% sodium azide and 50% glycerol pH 7.3.

Storage

Store at -20°C. DO NOT ALIQUOT

Clonality

Polyclonal

Ig Type

Rabbit IgG

Applications

ELISA, WB, IHC

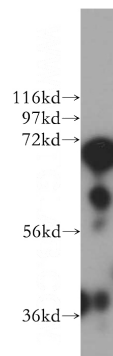
Dilutions

Recommended Dilution:

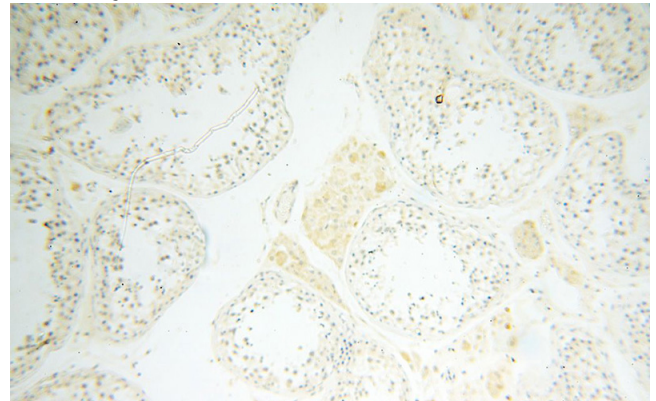
WB: 1:1000-1:10000

IHC: 1:20-1:200

Validations



HeLa cells were subjected to SDS PAGE followed by western blot with Catalog No:112519(METTL4 antibody) at dilution of 1:500



Immunohistochemical of paraffin-embedded human testis using Catalog No:112519(METTL4 antibody) at dilution of 1:100 (under 10x lens)