

# Human IL-1 beta (pro form, His Tag) recombinant protein



Catalog Number: 501519

## General Information

### Gene Name Synonym

Catabolin

### Protein Construction

A DNA sequence encoding the pro form of human IL1 $\beta$  (NP\_000567.1) (Met 1-Ser 269) was fused with a polyhistidine tag at the N-terminus.

### Organism

Human

### Expression Host

E. coli

## QC Testing

### Activity

1. Measured by its binding ability in a functional ELISA.
2. Immobilized human IL1 $\beta$  at 10  $\mu\text{g}/\text{mL}$  (100  $\mu\text{l}/\text{well}$ ) can bind human IL1R1. The  $\text{EC}_{50}$  of human IL1R1 is 0.198  $\mu\text{g}/\text{mL}$ .

### Purity

> 95 % as determined by SDS-PAGE

### Endotoxin

Please contact us for more information.

### Stability

Samples are stable for up to twelve months from date of receipt at  $-70^{\circ}\text{C}$

### Predicted N terminal

Met

### Molecular Mass

The recombinant pro form of human IL1 $\beta$  consisting of 280 amino acids and has a calculated molecular mass of 32.3 kDa. It migrates as an approximately 34 kDa band in SDS-PAGE under reducing conditions.

### Formulation

- Lyophilized from sterile PBS, pH 7.4
1. 5 % trehalose and mannitol are added as protectants before lyophilization.
  2. Please contact us for any concerns or special requirements.

## Usage Guide

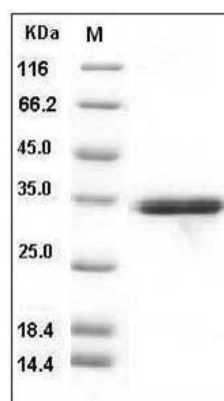
### Storage

Store it under sterile conditions at  $-20^{\circ}\text{C}$  to  $-80^{\circ}\text{C}$ . It is recommended that the protein be aliquoted for optimal storage. Avoid repeated freeze-thaw cycles.

### Reconstitution

Adding sterile water, prepare a stock solution of 0.25 mg/ml. Concentration is measured by UV-Vis.

### SDS-PAGE



Human IL-1 beta / IL1 $\beta$  Protein (pro form, His Tag) SDS-PAGE