

# Human PLA2G2D / Phospholipase A2 IID (Fc Tag) recombinant protein



Catalog Number: 500119

## General Information

### Gene Name Synonym

PLA2IID; Phosphatidylcholine 2-acylhydrolase 2D; Secretory-type PLA, stroma-associated homolog

### Protein Construction

A DNA sequence encoding the human PLA2G2D (Q9UNK4) (Met1-Cys145) was expressed with the Fc region of human IgG1 at the C-terminus.

### Organism

Human

### Expression Host

Human Cells

## QC Testing

### Purity

> 85 % as determined by SDS-PAGE

### Endotoxin

< 1.0 EU per  $\mu\text{g}$  of the protein as determined by the LAL method

### Stability

Samples are stable for up to twelve months from date of receipt at  $-70^{\circ}\text{C}$

### Predicted N terminal

Gly 21

### Molecular Mass

The recombinant human PLA2G2D/Fc is a disulfide-linked homodimer. The reduced

monomer comprises 366 amino acids and has a predicted molecular mass of 41.5 kDa. The apparent molecular mass of the protein is approximately 44 kDa in SDS-PAGE under reducing conditions.

### Formulation

Lyophilized from sterile PBS, pH 7.4.

1. 5 % trehalose and mannitol are added as protectants before lyophilization.
2. Please contact us for any concerns or special requirements.

## Usage Guide

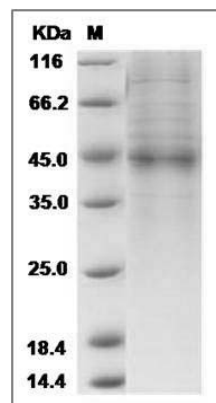
### Storage

Store it under sterile conditions at  $-20^{\circ}\text{C}$  to  $-80^{\circ}\text{C}$ . It is recommended that the protein be aliquoted for optimal storage. Avoid repeated freeze-thaw cycles.

### Reconstitution

Adding sterile water, prepare a stock solution of 0.25 mg/ml. Concentration is measured by UV-Vis.

### SDS-PAGE



Human PLA2G2D / Phospholipase A2 IID Protein (Fc Tag) SDS-PAGE