

# Human IL22RA2 recombinant protein (C-human IgG1-Fc)



Catalog Number: 514819

## General Information

### Gene Name Synonym

IL-22 receptor subunit alpha-2; IL-22R-alpha-2; IL-22RA2; Cytokine receptor class-II member 10; Cytokine receptor family 2 member 10; CRF2-10; Cytokine receptor family type 2, soluble 1; CRF2-S1; Interleukin-22-binding protein; IL-22BP; IL22BP; ZcytoR16

### Protein Construction

A DNA sequence encoding the human IL22RA2 (NP\_443194.1) (Met1-Pro263) was expressed with the Fc region of human IgG1 at the C-terminus.

### Organism

Human

### Expression Host

Human Cells

## QC Testing

### Purity

> 90 % as determined by SDS-PAGE.

### Endotoxin

< 1.0 EU per  $\mu\text{g}$  protein as determined by the LAL method.

### Stability

Samples are stable for up to twelve months from date of receipt at  $-70^{\circ}\text{C}$

### Predicted N terminal

Thr 22

## Molecular Mass

The recombinant human IL22RA2 consists of 480 amino acids and predicts a molecular mass of 55 kDa.

## Formulation

Lyophilized from sterile PBS, pH 7.4.

1. Normally 5 % - 8 % trehalose, mannitol and 0.01% Tween80 are added as protectants before lyophilization. Specific concentrations are included in the hardcopy of COA.
2. Please contact us for any concerns or special requirements.

## Usage Guide

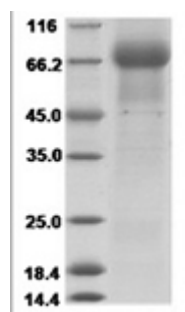
### Storage

Store it under sterile conditions at  $-20^{\circ}\text{C}$  to  $-80^{\circ}\text{C}$ . It is recommended that the protein be aliquoted for optimal storage. Avoid repeated freeze-thaw cycles.

### Reconstitution

A hardcopy of COA with reconstitution instruction is sent along with the products. Please refer to it for detailed information.

## SDS-PAGE



Human IL-22BP/IL-22RA2 Protein 15325