

# LZTFL1 antibody

Catalog Number: 112419

## Product name

LZTFL1 antibody

IP: 1:200-1:2000

IHC: 1:20-1:200

## Specificity

Human, Mouse, Rat; other species not tested.

## Antibody description

LZTFL1 Rabbit Polyclonal antibody. Positive IHC detected in human heart tissue, human testis tissue. Positive IP detected in HEK-293 cells. Positive WB detected in human testis tissue, HEK-293 cells. Observed molecular weight by Western-blot: 35 kDa

## Preparation

This antibody was obtained by immunization of LZTFL1 recombinant protein (Accession Number: NM\_020347). Purification method: Antigen affinity purified.

## Formulation

PBS with 0.1% sodium azide and 50% glycerol pH 7.3.

## Storage

Store at -20°C. DO NOT ALIQUOT

## Clonality

Polyclonal

## Ig Type

Rabbit IgG

## Applications

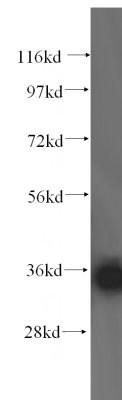
ELISA, WB, IHC, IP

## Dilutions

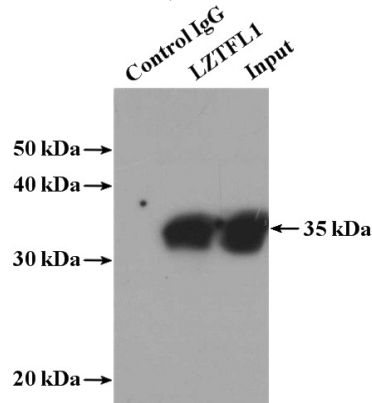
Recommended Dilution:

WB: 1:200-1:2000

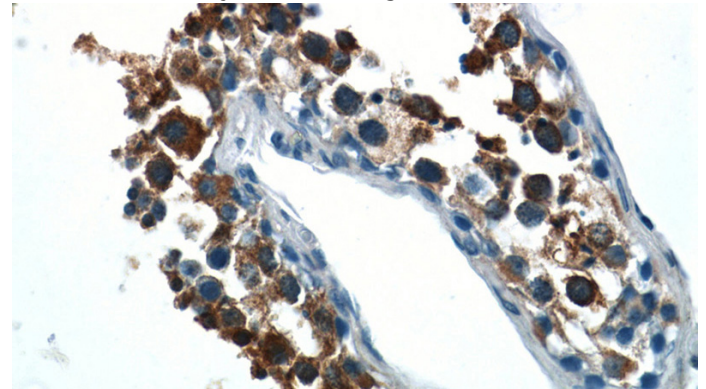
## Validations



human testis tissue were subjected to SDS PAGE followed by western blot with Catalog No:112419(LZTFL1 antibody) at dilution of 1:500



IP Result of anti-LZTFL1 (IP:Catalog No:112419, 4ug; Detection:Catalog No:112419 1:800) with HEK-293 cells lysate 3000ug.



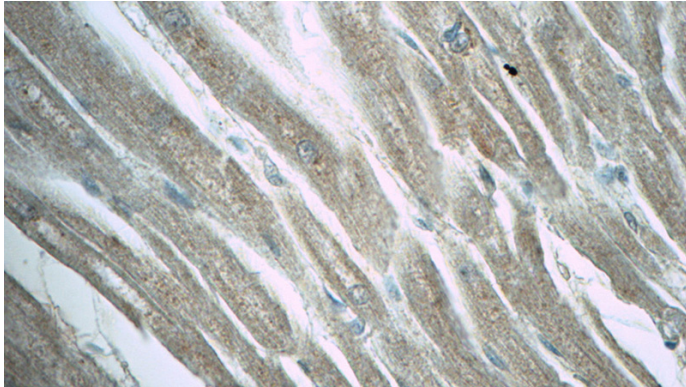
Immunohistochemistry of paraffin-embedded human testis tissue slide using Catalog

# LZTFL1 antibody

Catalog Number: 112419

---

No:112419(LZTFL1 Antibody) at dilution of 1:50  
(under 40x lens)



Immunohistochemistry of paraffin-embedded  
human heart tissue slide using Catalog  
No:112419(LZTFL1 Antibody) at dilution of 1:50  
(under 40x lens)