

Anti-RPS3 antibody



Catalog Number: 142419

Product name

Anti-RPS3 antibody

ICC/IF: 0.5-1.5 µg/mL

IP: 0.5-2 uL/mg of lysate

Specificity

Human RPS3

Validations

Antibody description

Rabbit Polyclonal to Human RPS3

Preparation

Produced in rabbits immunized with a synthetic peptide corresponding to the C-terminus of the Human RPS3, and purified by antigen affinity chromatography.

Formulation

0.2 µm filtered solution in PBS

Storage

This antibody can be stored at 2°C-8°C for one month without detectable loss of activity. Antibody products are stable for twelve months from date of receipt when stored at -20°C to -80°C.

Preservative-Free.

Sodium azide is recommended to avoid contamination (final concentration 0.05%-0.1%). It is toxic to cells and should be disposed of properly. Avoid repeated freeze-thaw cycles.

Clonality

Polyclonal

Ig Type

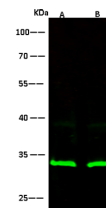
Rabbit IgG

Applications

WB, ICC/IF, IF, IP

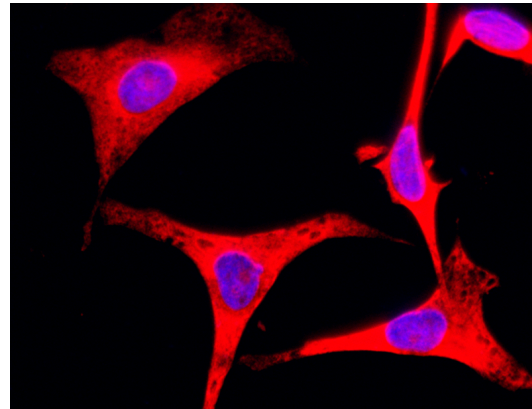
Dilutions

WB: 2-10 µg/ml

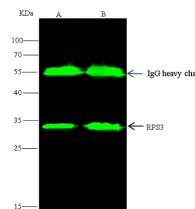


Items	Lanes	A	B
Sample (whole cell lysate)		HepG2	Jurkat
Sample Volume (µg/lane)		30	30
Gel		13% SDS-PAGE reducing gel	
Recommended Concentration		2-10 µg/ml	
Secondary Antibody		Dylight 800-labeled Antibody To Rabbit IgG (H+L), at 1:5000 dilution.	
Developed using Odyssey imaging system.			
Explanation		Predicted band size : 27 kDa Observed band size : 32 kDa	

RPS3 Antibody, Rabbit PAb, Antigen Affinity Purified, Western blot



RPS3 Antibody, Rabbit PAb, Antigen Affinity Purified, Immunofluorescence



Items	Lanes	A	B
Sample (whole cell lysate)		HepG2	Jurkat
Sample quantity		0.5 mg	
IP antibody quantity		2 µg	
Protein G agarose		15 µl of 50% Protein G Agarose	
Gel		13% SDS-PAGE reducing gel	
Primary antibody		IPV16-SMCC-muA1346 antibody at 5 µg/ml	
Secondary antibody		Dylight 800-labeled antibody to rabbit IgG (H+L), at 1:5000 dilution.	

RPS3 Antibody, Rabbit PAb, Antigen Affinity Purified, Immunoprecipitation