

Anti-ACAP2 Rabbit antibody



Catalog Number: 169019

Product name

Anti-ACAP2 Rabbit antibody

Specificity

Human, Mouse, Rat

Antibody description

ACAP2 Rabbit monoclonal antibody

Preparation

Antigen: A synthetic peptide of human Centaurin beta 2

Formulation

50nM Tris-Glycine(pH 7.4), 0.15M NaCl, 40%Glycerol, 0.01% sodium azide and 0.05% BSA.

Storage

Store at 4°C short term. Store at -20°C long term. Avoid freeze / thaw cycle.

Clonality

Monoclonal

Ig Type

Rabbit IgG

Applications

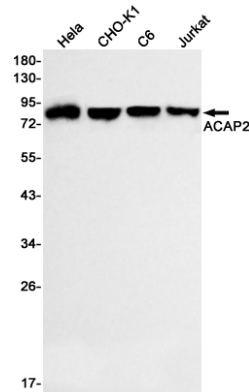
WB, FC

Dilutions

WB: 1/1000-1/2000

FC: 1/50

Validations



Western blot detection of ACAP2 in HeLa, CHO-K1, C6, Jurkat cell lysates using ACAP2 Rabbit mAb(1:500 diluted). Predicted band size: 88kDa. Observed band size: 88kDa.