

ANAPC5 antibody

Catalog Number: 108019

Product name

ANAPC5 antibody

Specificity

Human, Mouse, Rat; other species not tested.

Antibody description

ANAPC5 Rabbit Polyclonal antibody. Positive WB detected in BxPC-3 cells, mouse lung tissue. Positive IHC detected in human pancreas cancer tissue. Observed molecular weight by Western-blot: 85 kDa

Preparation

This antibody was obtained by immunization of ANAPC5 recombinant protein (Accession Number: NM_016237). Purification method: Antigen affinity purified.

Formulation

PBS with 0.02% sodium azide and 50% glycerol pH 7.3.

Storage

Store at -20°C. DO NOT ALIQUOT

Clonality

Polyclonal

Ig Type

Rabbit IgG

Applications

ELISA, WB, IHC

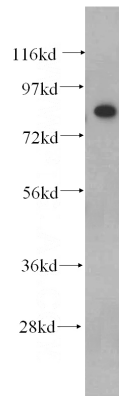
Dilutions

Recommended Dilution:

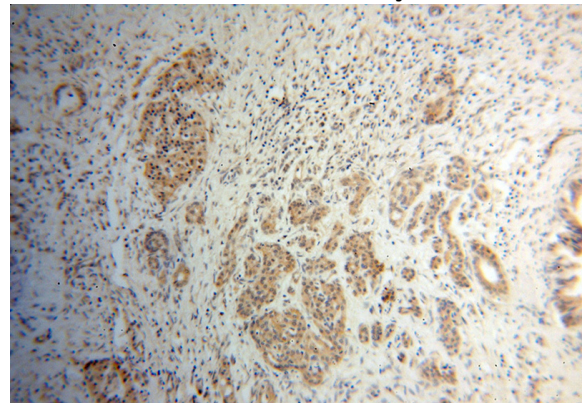
WB: 1:200-1:2000

IHC: 1:20-1:200

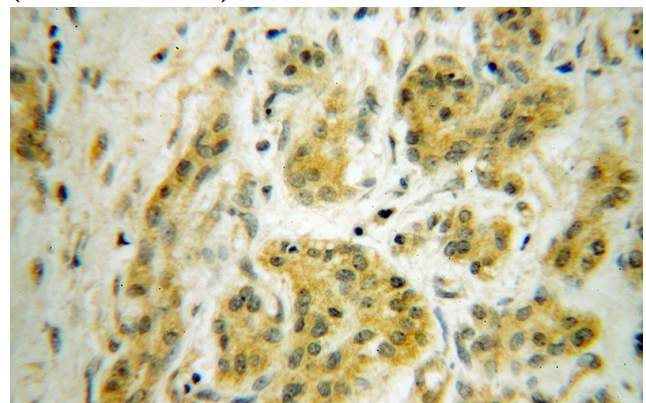
Validations



BxPC-3 cells were subjected to SDS PAGE followed by western blot with Catalog No:108019(ANAPC5 antibody) at dilution of 1:500



Immunohistochemical of paraffin-embedded human pancreas cancer using Catalog No:108019(ANAPC5 antibody) at dilution of 1:50 (under 10x lens)



Immunohistochemical of paraffin-embedded human pancreas cancer using Catalog

ANAPC5 antibody



Catalog Number: 108019

No:108019(ANAPC5 antibody) at dilution of 1:50 (under 40x lens)