

# NALP3 antibody

Catalog Number: 113019

## Product name

NALP3 antibody

IHC: 1:20-1:200

IF: 1:10-1:100

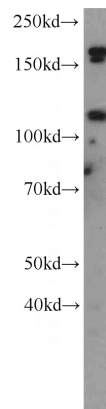
## Specificity

Human; other species not tested.

## Antibody description

NALP3 Rabbit Polyclonal antibody. Positive IF detected in HepG2 cells. Positive IHC detected in human bladder tissue, human breast cancer tissue, human oesophagus tissue, human tonsillitis tissue. Positive WB detected in K-562 cells, SH-SY5Y cells. Observed molecular weight by Western-blot: 108-110 kDa

## Validations



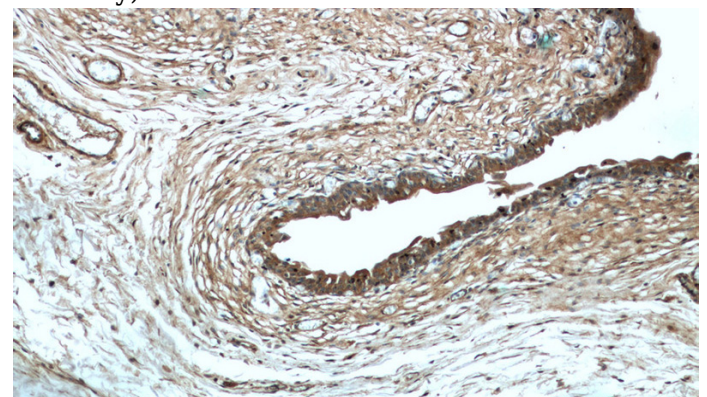
## Preparation

This antibody was obtained by immunization of Peptide (Accession Number: NM\_001127461). Purification method: Antigen affinity purified.

K-562 cells were subjected to SDS PAGE followed by western blot with Catalog No:113019(NALP3 antibody) at dilution of 1:500

## Formulation

PBS with 0.02% sodium azide and 50% glycerol pH 7.3.



## Storage

Store at -20°C. DO NOT ALIQUOT

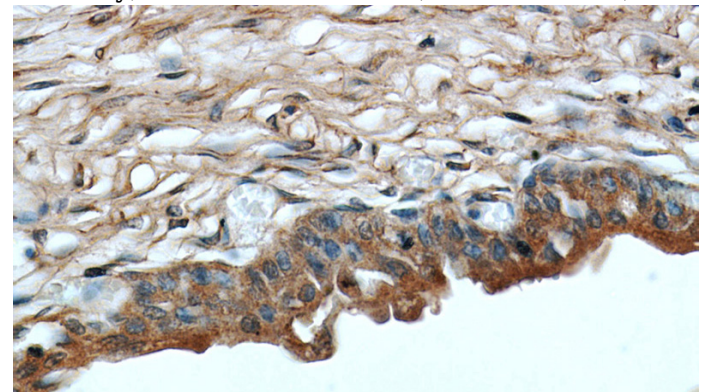
## Clonality

Polyclonal

Immunohistochemical of paraffin-embedded human bladder using Catalog No:113019(NALP3 antibody) at dilution of 1:200 (under 10x lens)

## Ig Type

Rabbit IgG



## Applications

ELISA, WB, IHC, IF

## Dilutions

Recommended Dilution:

WB: 1:200-1:2000

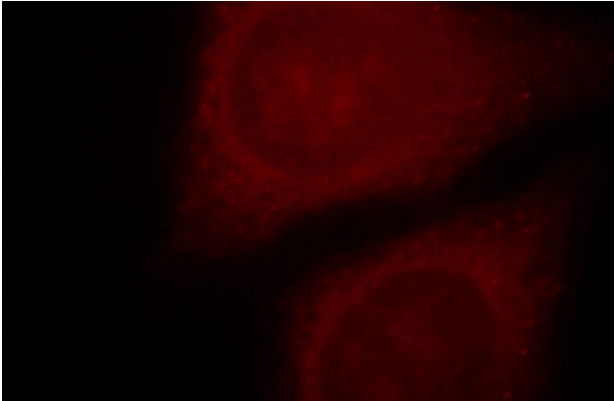
Immunohistochemical of paraffin-embedded human bladder using Catalog No:113019(NALP3

# NALP3 antibody

Catalog Number: 113019

---

antibody) at dilution of 1:200 (under 40x lens)



Immunofluorescent analysis of HepG2 cells, using NLRP3 antibody Catalog No:113019 at 1:25 dilution and Rhodamine-labeled goat anti-rabbit IgG (red).