

# Anti-AKT1 Rabbit antibody



Catalog Number: 166709

## Product name

Anti-AKT1 Rabbit antibody

## Specificity

Human, Mouse, Rat

## Antibody description

AKT1 Rabbit polyclonal antibody

## Preparation

Antigen: A synthesized peptide derived from human AKT1

## Formulation

Rabbit IgG in phosphate buffered saline , pH 7.4, 150mM NaCl, 0.02% sodium azide and 50% glycerol.

## Storage

Store at 4°C short term. Store at -20°C long term. Avoid freeze / thaw cycle.

## Clonality

Polyclonal

## Ig Type

Rabbit IgG

## Applications

WB, IHC-P, ICC/IF, IP, FC

## Dilutions

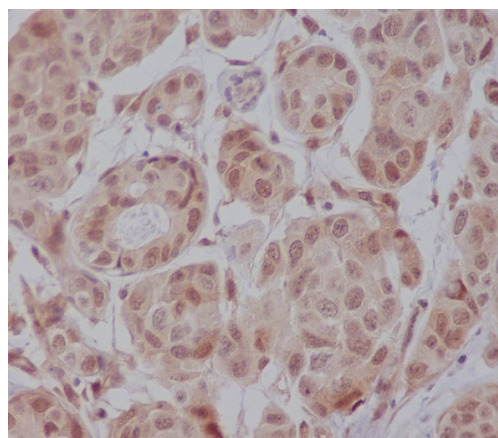
WB: 1/500-1/2000

IHC: 1/50-1/200

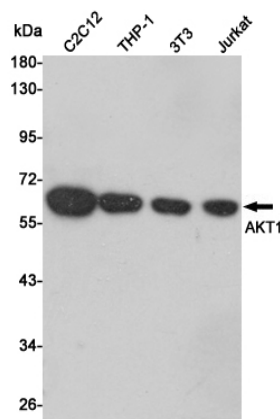
ICC/IF: 1/50-1/200

IP: 1/50

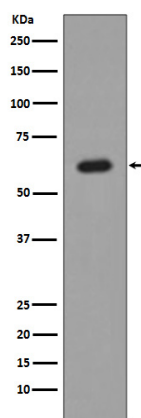
## Validations



Immunohistochemical analysis of paraffin-embedded human colon, using AKT1 Antibody.



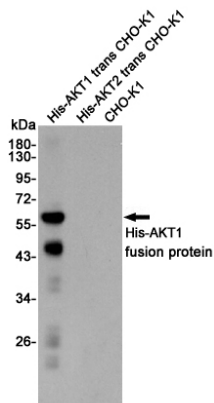
Western blot analysis of AKT1 expression in C2C12, THP-1, 3T3 and Jurkat cell lysates using AKT1 antibody at 1/1000 dilution. Predicted band size: 60KDa. Observed band size: 60KDa.



Western blot analysis of AKT1 expression in

# Anti-AKT1 Rabbit antibody

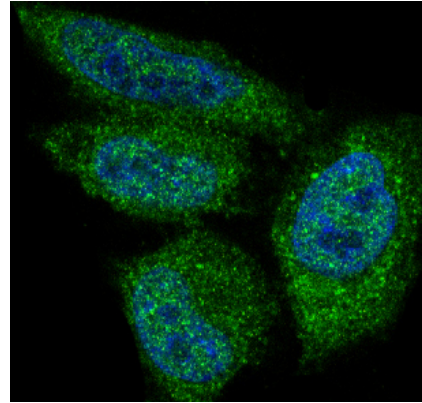
Catalog Number: 166709



MCF-7 cell lysate.

Western blot analysis of AKT1 expression in His-AKT1 trans CHO-K1, His-AKT2 trans CHO-K1 and CHO-K1 cell lysates using AKT1 antibody at

1/1000 dilution. Predicted band size: 60KDa. Observed band size: 60KDa.



Immunofluorescent analysis of HeLa cells, using AKT1 Antibody.