

# Anti-PRDM4 antibody



Catalog Number: 141709

## Product name

Anti-PRDM4 antibody

## Specificity

Human PRDM4 / PFM1

## Antibody description

Rabbit Polyclonal to Human PRDM4

## Preparation

Produced in rabbits immunized with a synthetic peptide corresponding to the C-terminus of the Human PRDM4 / PFM1, and purified by antigen affinity chromatography.

## Formulation

0.2  $\mu$ m filtered solution in PBS

## Storage

This antibody can be stored at 2°C-8°C for one month without detectable loss of activity. Antibody products are stable for twelve months from date of receipt when stored at -20°C to -80°C.

Preservative-Free.

Sodium azide is recommended to avoid

contamination (final concentration 0.05%-0.1%). It is toxic to cells and should be disposed of properly. Avoid repeated freeze-thaw cycles.

## Clonality

Polyclonal

## Ig Type

Rabbit IgG

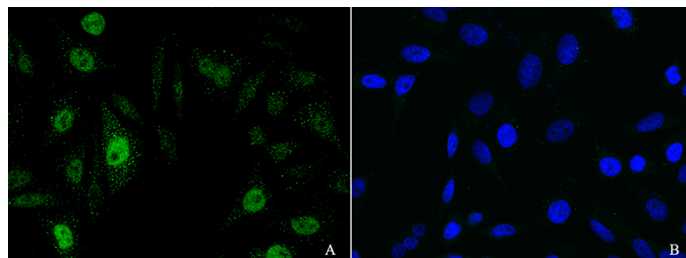
## Applications

ICC/IF, IF

## Dilutions

ICC/IF: 0.5-1.5 $\mu$ g/mL

## Validations



PRDM4 / PFM1 Antibody, Rabbit PAb, Antigen Affinity Purified, Immunofluorescence