

ATP6V1C2 antibody



Catalog Number: 108309

Product name

ATP6V1C2 antibody

Specificity

human, mouse, rat; other species not tested.

Antibody description

ATP6V1C2 Rabbit Polyclonal antibody. Positive IHC detected in human testis. Positive WB detected in human kidney tissue, mouse kidney tissue. Observed molecular weight by Western-blot: 44 kDa

Preparation

This antibody was obtained by immunization of ATP6V1C2 recombinant protein (Accession Number: NM_144583). Purification method: Antigen affinity purified.

Formulation

PBS with 0.02% sodium azide and 50% glycerol pH 7.3.

Storage

Store at -20°C. DO NOT ALIQUOT

Clonality

Polyclonal

Ig Type

Rabbit IgG

Applications

ELISA, WB, IHC

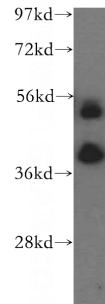
Dilutions

Recommended Dilution:

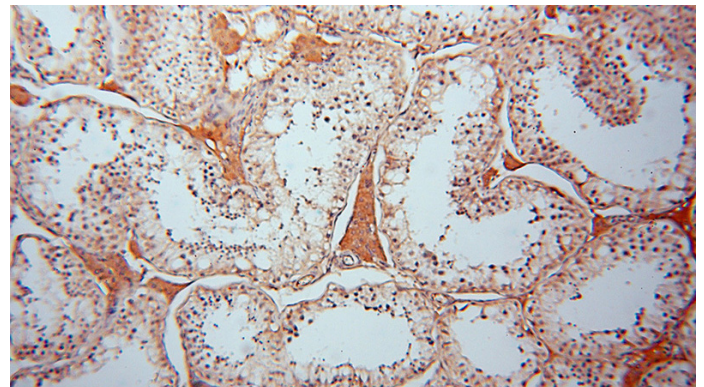
WB: 1:200-1:2000

IHC: 1:20-1:200

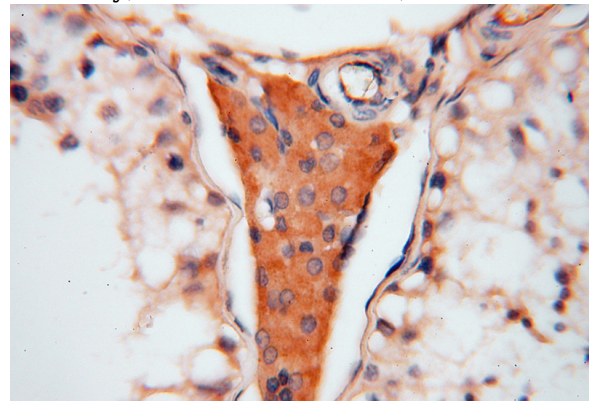
Validations



human kidney tissue were subjected to SDS PAGE followed by western blot with Catalog No:108309(ATP6V1C2 antibody) at dilution of 1:500



Immunohistochemical of paraffin-embedded human testis using Catalog No:108309(ATP6V1C2 antibody) at dilution of 1:50 (under 10x lens)



Immunohistochemical of paraffin-embedded human testis using Catalog No:108309(ATP6V1C2 antibody) at dilution of 1:50 (under 40x lens)