

# BMP15 Polyclonal Antibody



Catalog Number: 165309

## Product name

BMP15 Polyclonal Antibody

## Specificity

Human, Mouse, Rat

## Antibody description

Polyclonal antibody to BMP15

## Preparation

Antigen: Recombinant fusion protein containing a sequence corresponding to amino acids 143-392 of human BMP15 (NP\_005439.2).

## Formulation

PBS with 0.02% sodium azide, 50% glycerol, pH7.3.

## Storage

Store at -20°C. Avoid freeze / thaw cycles.

## Clonality

Polyclonal

## Ig Type

Rabbit IgG

## Applications

WB, IHC, IF

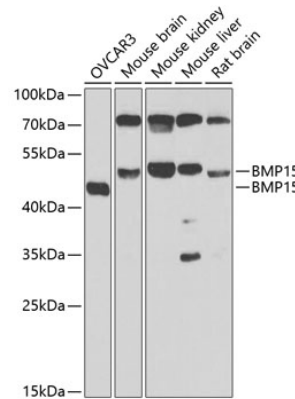
## Dilutions

WB 1:500 - 1:2000

IHC 1:50 - 1:200

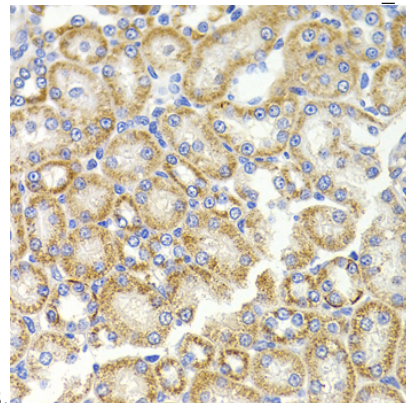
IF 1:50 - 1:100

## Validations



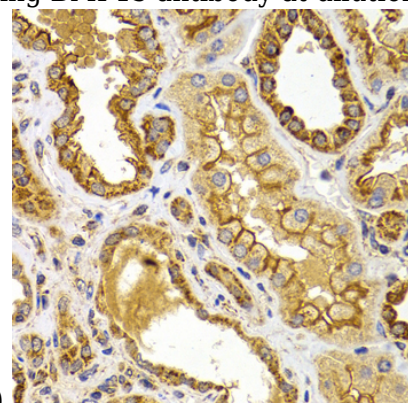
Western blot - BMP15 Polyclonal Antibody

Western blot analysis of extracts of various cell lines, using BMP15 antibody at 1:1000 dilution. Secondary antibody: HRP Goat Anti-Rabbit IgG (H+L) at 1:10000 dilution. Lysates/proteins: 25ug per lane. Blocking buffer: 3% nonfat dry milk in TBST. Detection: ECL Enhanced Kit. Exposure



Immunohistochemistry - BMP15 Polyclonal Antibody

Immunohistochemistry of paraffin-embedded rat kidney using BMP15 antibody at dilution of 1:100



(40x lens).

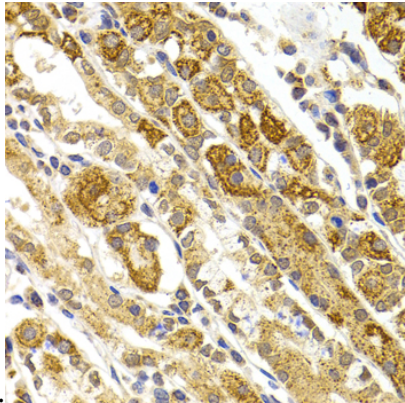
# BMP15 Polyclonal Antibody

Catalog Number: 165309

---

## Immunohistochemistry - BMP15 Polyclonal Antibody

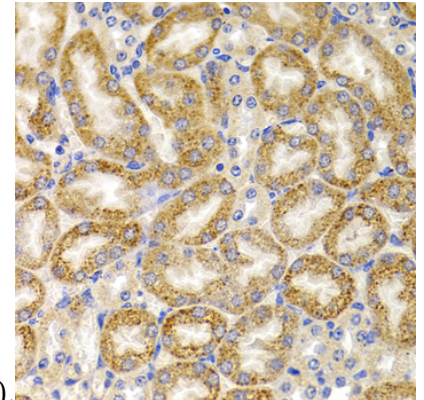
Immunohistochemistry of paraffin-embedded human kidney using BMP15 antibody at dilution of



1:100 (40x lens).

## Immunohistochemistry - BMP15 Polyclonal Antibody

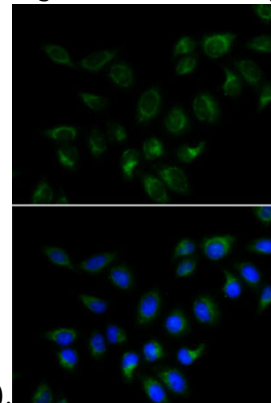
Immunohistochemistry of paraffin-embedded human stomach using BMP15 antibody at dilution of



of 1:100 (40x lens).

## Immunohistochemistry - BMP15 Polyclonal Antibody

Immunohistochemistry of paraffin-embedded mouse kidney using BMP15 antibody at dilution of



1:100 (40x lens).

## Immunofluorescence - BMP15 Polyclonal Antibody

Immunofluorescence analysis of MCF7 cells using BMP15 antibody . Blue: DAPI for nuclear staining.