

NOTCH3 antibody

Catalog Number: 113309

Product name

NOTCH3 antibody

IP: 1:200-1:2000

IHC: 1:20-1:200

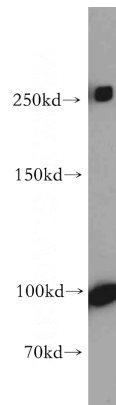
Specificity

Human, Mouse, Rat; other species not tested.

Antibody description

NOTCH3 Rabbit Polyclonal antibody. Positive IHC detected in human breast cancer tissue, human lung tissue. Positive IP detected in HeLa cells. Positive WB detected in COLO 320 cells, HeLa cells. Observed molecular weight by Western-blot: 250-260 kDa, 100 kDa

Validations



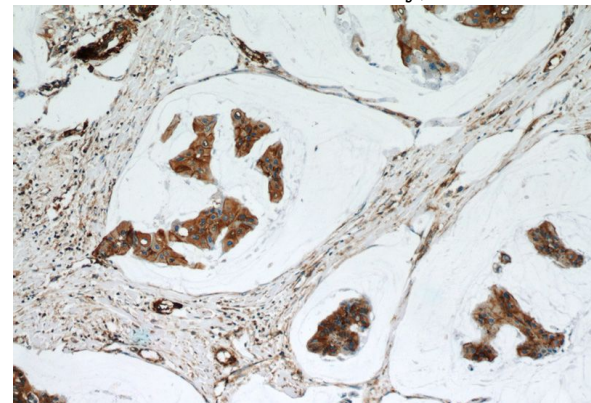
Preparation

This antibody was obtained by immunization of Peptide (Accession Number: NM_000435). Purification method: Antigen affinity purified.

COLO 320 cells were subjected to SDS PAGE followed by western blot with Catalog No:113309(NOTCH3 antibody) at dilution of 1:500

Formulation

PBS with 0.02% sodium azide and 50% glycerol pH 7.3.



Storage

Store at -20°C. DO NOT ALIQUOT

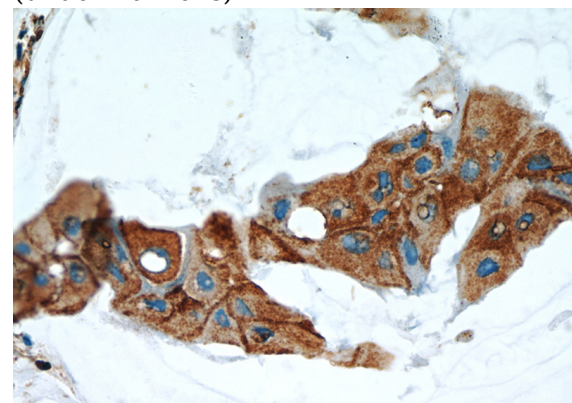
Clonality

Polyclonal

Immunohistochemical of paraffin-embedded human breast cancer using Catalog No:113309(NOTCH3 antibody) at dilution of 1:50 (under 10x lens)

Ig Type

Rabbit IgG



Applications

ELISA, WB, IHC, IP

Dilutions

Recommended Dilution:

WB: 1:500-1:5000

Immunohistochemical of paraffin-embedded

NOTCH3 antibody

Catalog Number: 113309

human breast cancer using Catalog No:113309(NOTCH3 antibody) at dilution of 1:50 (under 40x lens)

IP Result of anti-NOTCH3 (IP:Catalog No:113309, 4ug; Detection:Catalog No:113309 1:500) with HeLa cells lysate 2400ug.

