

LPP antibody

Catalog Number: 112309

Product name

LPP antibody

WB: 1:1000-1:10000

IHC: 1:20-1:200

Specificity

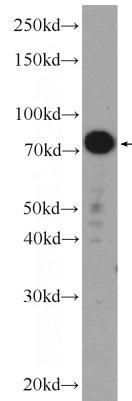
Human, Mouse; other species not tested.

IF: 1:10-1:100

Antibody description

LPP Rabbit Polyclonal antibody. Positive FC detected in HeLa cells. Positive IF detected in HeLa cells. Positive IHC detected in human small intestine tissue, human kidney tissue. Positive WB detected in mouse colon tissue, HeLa cells, MCF-7 cells, NIH/3T3 cells. Observed molecular weight by Western-blot: 70-75 kDa

Validations



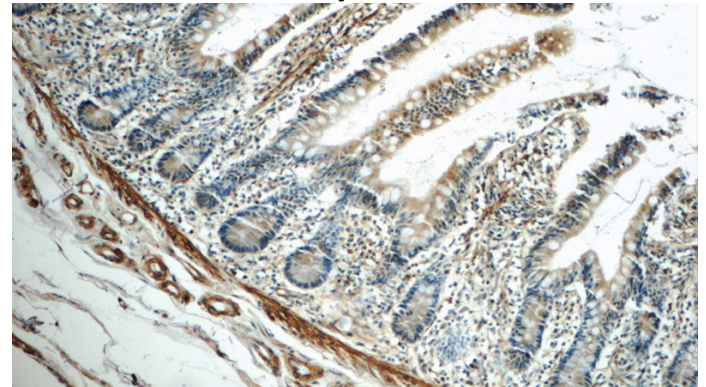
Preparation

This antibody was obtained by immunization of LPP recombinant protein (Accession Number: NM_005578). Purification method: Antigen affinity purified.

mouse colon tissue were subjected to SDS PAGE followed by western blot with Catalog No:112309(LPP Antibody) at dilution of 1:2000

Formulation

PBS with 0.1% sodium azide and 50% glycerol pH 7.3.



Storage

Store at -20°C. DO NOT ALIQUOT

Clonality

Polyclonal

Immunohistochemistry of paraffin-embedded human small intestine tissue slide using Catalog No:112309(LPP Antibody) at dilution of 1:50 (under 10x lens)

Ig Type

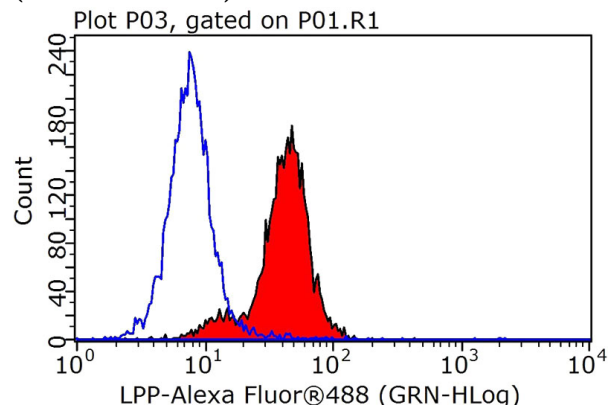
Rabbit IgG

Applications

ELISA, WB, IHC, IF, FC

Dilutions

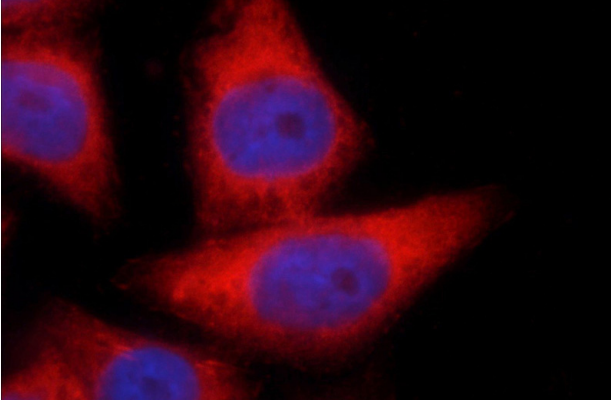
Recommended Dilution:



LPP antibody

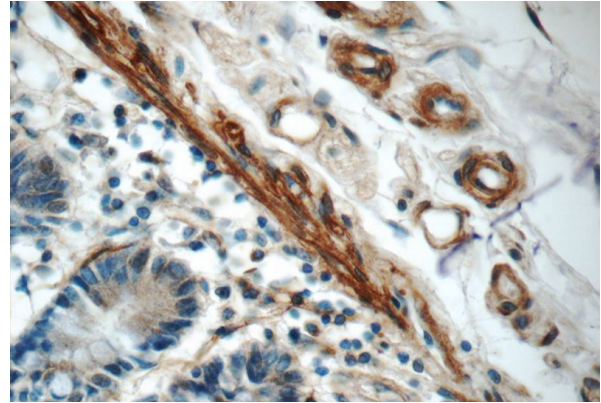
Catalog Number: 112309

1X10⁶ HeLa cells were stained with 0.05ug LPP antibody (Catalog No:112309, red) and control antibody (blue). Fixed with 90% MeOH blocked with 3% BSA (30 min). Alexa Fluor 488-Goat anti-Rabbit IgG with dilution 1:100.



Immunofluorescent analysis of HeLa cells using

Catalog No:112309(LPP Antibody) at dilution of 1:25 and Rhodamine-Goat anti-Rabbit IgG



Immunohistochemistry of paraffin-embedded human small intestine tissue slide using Catalog No:112309(LPP Antibody) at dilution of 1:50 (under 40x lens)