

# Anti-CXCR3 antibody



Catalog Number: 142309

## Product name

Anti-CXCR3 antibody

## Specificity

Human CXCR3

## Antibody description

Rabbit Polyclonal to Human CXCR3

## Preparation

Produced in rabbits immunized with a synthetic peptide corresponding to the C-terminus of the Human CXCR3, and purified by antigen affinity chromatography.

## Formulation

0.2 µm filtered solution in PBS

## Storage

This antibody can be stored at 2°C-8°C for one month without detectable loss of activity. Antibody products are stable for twelve months from date of receipt when stored at -20°C to -80°C.

Preservative-Free.

Sodium azide is recommended to avoid contamination (final concentration 0.05%-0.1%). It is toxic to cells and should be disposed of

properly. Avoid repeated freeze-thaw cycles.

## Clonality

Polyclonal

## Ig Type

Rabbit IgG

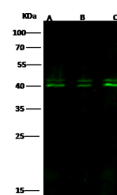
## Applications

WB

## Dilutions

WB: 5-20 µg/ml

## Validations



Lanes	A	B	C
Items			
Sample (whole cell lysate)	K562	Hela	HuT78
Sample Volume (µg/lane)	30	30	30
Gel	13% SDS-PAGE reducing gel		
Recommended Concentration	10 µg/ml		
Secondary Antibody	Dylight 800-labeled Antibody to Rabbit IgG (H+), at 1:5000 dilution.		
Developed using Odyssey imaging system.			
Explanation	Predicted band size : 41 kDa Observed band size : 40 kDa		

CXCR3 Antibody, Rabbit PAb, Antigen Affinity Purified, Western blot