

# CSRP2 antibody

Catalog Number: 109609

## Product name

CSRP2 antibody

## Specificity

Human, Mouse, Rat; other species not tested.

## Antibody description

CSRP2 Rabbit Polyclonal antibody. Positive IP detected in mouse liver tissue. Positive WB detected in mouse liver tissue, HepG2 cells, human vein tissue, mouse kidney tissue. Observed molecular weight by Western-blot: 21 kDa

## Preparation

This antibody was obtained by immunization of CSRP2 recombinant protein (Accession Number: XM\_047428395). Purification method: Antigen affinity purified.

## Formulation

PBS with 0.1% sodium azide and 50% glycerol pH 7.3.

## Storage

Store at -20°C. DO NOT ALIQUOT

## Clonality

Polyclonal

## Ig Type

Rabbit IgG

## Applications

ELISA, WB, IP

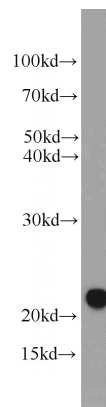
## Dilutions

Recommended Dilution:

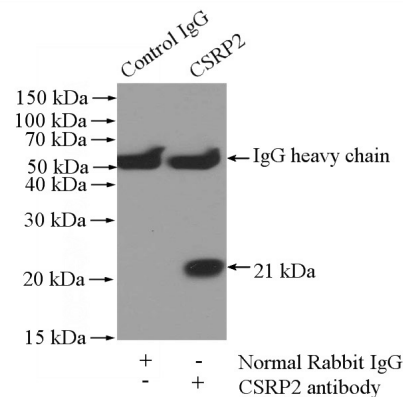
WB: 1:500-1:5000

IP: 1:500-1:5000

## Validations



mouse liver tissue were subjected to SDS PAGE followed by western blot with Catalog No:109609(CSRP2 antibody) at dilution of 1:1000



IP Result of anti-CSRP2 (IP:Catalog No:109609, 4ug; Detection:Catalog No:109609 1:1000) with mouse liver tissue lysate 4000ug.