

FDX1 antibody

Catalog Number: 110609

Product name

FDX1 antibody

IHC: 1:20-1:200

IF: 1:20-1:200

Specificity

Human, Mouse, Rat; other species not tested.

Antibody description

FDX1 Rabbit Polyclonal antibody. Positive IF detected in HepG2 cells. Positive IHC detected in human kidney tissue, human liver tissue. Positive WB detected in HepG2 cells, A549 cells, HEK-293 cells, PC-3 cells. Observed molecular weight by Western-blot: 14 kDa

Preparation

This antibody was obtained by immunization of FDX1 recombinant protein (Accession Number: NM_004109). Purification method: Antigen affinity purified.

Formulation

PBS with 0.1% sodium azide and 50% glycerol pH 7.3.

Storage

Store at -20°C. DO NOT ALIQUOT

Clonality

Polyclonal

Ig Type

Rabbit IgG

Applications

ELISA, WB, IHC, IF

Dilutions

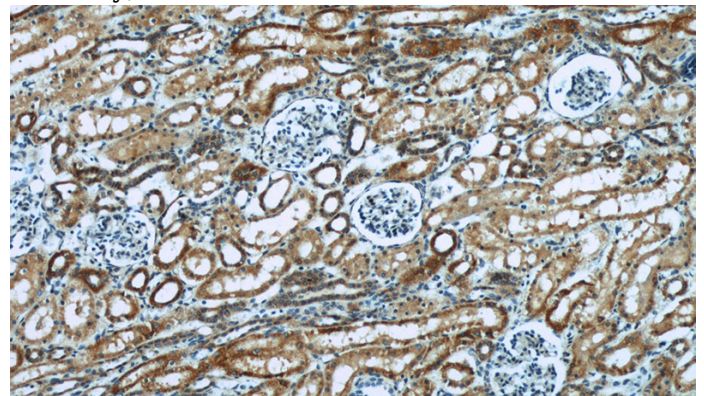
Recommended Dilution:

WB: 1:500-1:5000

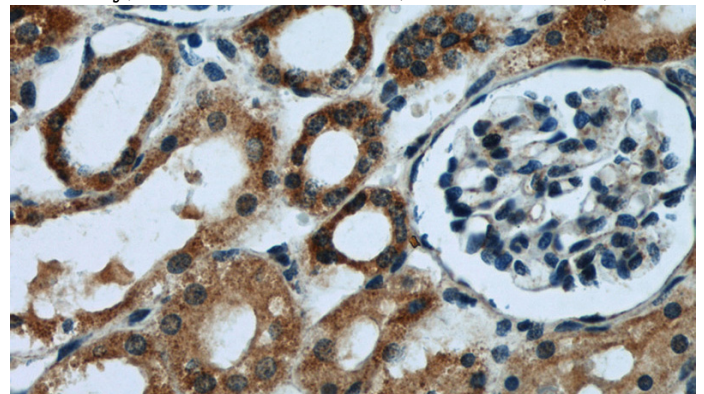
Validations



HepG2 cells were subjected to SDS PAGE followed by western blot with Catalog No:110609(FDX1 antibody) at dilution of 1:1000



Immunohistochemical of paraffin-embedded human kidney using Catalog No:110609(FDX1 antibody) at dilution of 1:50 (under 10x lens)

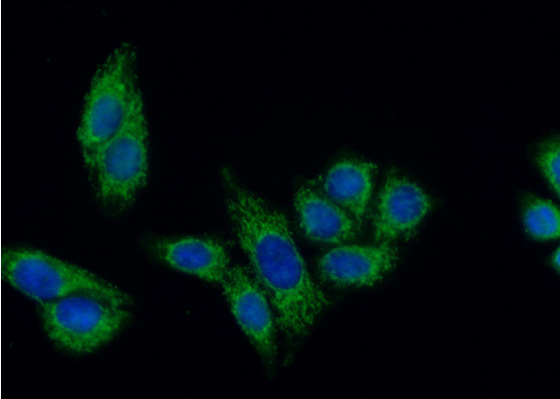


Immunohistochemical of paraffin-embedded human kidney using Catalog No:110609(FDX1

FDX1 antibody

Catalog Number: 110609

antibody) at dilution of 1:50 (under 40x lens)



Immunofluorescent analysis of (10% Formaldehyde) fixed HepG2 cells using Catalog No:110609(FDX1 Antibody) at dilution of 1:50 and Alexa Fluor 488-conjugated AffiniPure Goat Anti-Rabbit IgG(H+L)