

LGP2 antibody

Catalog Number: 112209

Product name

LGP2 antibody

IP: 1:200-1:1000

IHC: 1:10-1:100

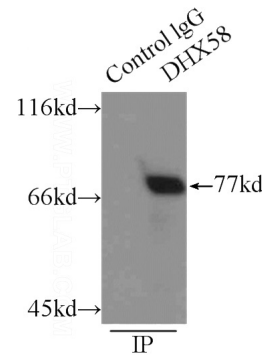
Specificity

Human, Mouse, Rat; other species not tested.

Validations

Antibody description

LGP2 Rabbit Polyclonal antibody. Positive IP detected in mouse liver tissue. Positive WB detected in HEK-293 cells. Positive IHC detected in human breast cancer tissue. Observed molecular weight by Western-blot: 77 kDa



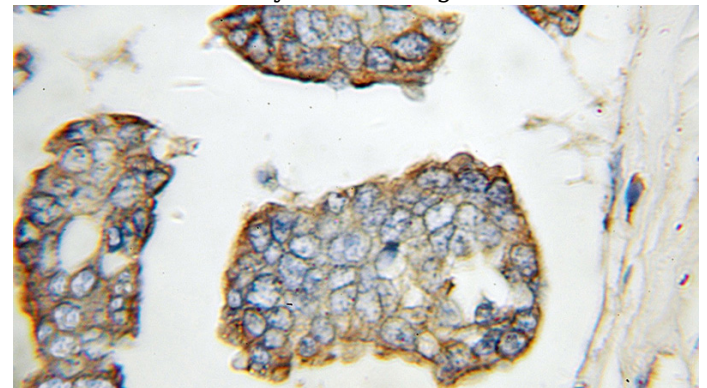
Preparation

This antibody was obtained by immunization of LGP2 recombinant protein (Accession Number: XM_047436724). Purification method: Antigen affinity purified.

IP Result of anti-DHX58 (IP: Catalog No: 112209, 3ug; Detection: Catalog No: 112209 1:300) with mouse liver tissue lysate 6000ug.

Formulation

PBS with 0.1% sodium azide and 50% glycerol pH 7.3.



Storage

Store at -20°C. DO NOT ALIQUOT

Immunohistochemical of paraffin-embedded human breast cancer using Catalog No: 112209 (DHX58 antibody) at dilution of 1:10

Clonality

Polyclonal

Ig Type

Rabbit IgG

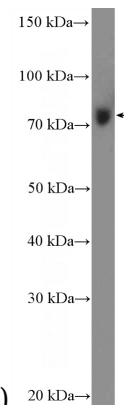
Applications

ELISA, IHC, IP, WB

Dilutions

Recommended Dilution:

WB: 1:200-1:1000



(under 10x lens)

HEK-293 cells were subjected to SDS PAGE followed by western blot with Catalog

LGP2 antibody



Catalog Number: 112209

No:112209(DHX58 Antibody) at dilution of 1:300