

Anti-Integrin beta 5 Rabbit antibody



Catalog Number: 168909

Product name

Anti-Integrin beta 5 Rabbit antibody

Specificity

Human, Mouse, Rat

Antibody description

Integrin beta 5 Rabbit monoclonal antibody

Preparation

Antigen: Recombinant protein of human Integrin beta 5

Formulation

50nM Tris-Glycine(pH 7.4), 0.15M NaCl, 40%Glycerol, 0.01% sodium azide and 0.05% BSA.

Storage

Store at 4°C short term. Store at -20°C long term. Avoid freeze / thaw cycle.

Clonality

Monoclonal

Ig Type

Rabbit IgG

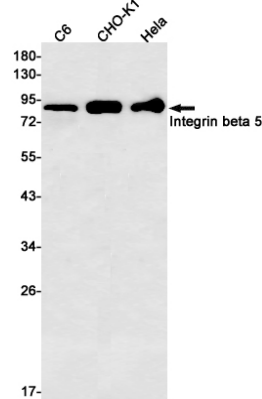
Applications

WB

Dilutions

WB: 1/1000

Validations



Western blot detection of Integrin beta 5 in C6,CHO-K1,HeLa cell lysates using Integrin beta 5 Rabbit mAb(1:500 diluted).Predicted band size:88kDa.Observed band size:88kDa.