

# Anti-IL32 antibody



Catalog Number: 105909

## Product name

Anti-IL32 antibody

## Immunogen

[Human IL32 \(isoform alpha, His Tag\) recombinant protein](#)

## Specificity

Human IL32

## Antibody description

Rabbit polyclonal to IL32

## Preparation

Produced in rabbits immunized with purified, recombinant Human IL32 (rh IL32; NP\_001012651.1; Met1-Lys131). IL32 specific IgG was purified by Human IL32 affinity chromatography.

## Formulation

0.2 µm filtered solution in PBS

## Storage

This antibody can be stored at 2°C-8°C for one month without detectable loss of activity. Antibody products are stable for twelve months from date of receipt when stored at -20°C to -80°C.

Preservative-Free.

Sodium azide is recommended to avoid contamination (final concentration 0.05%-0.1%). It is toxic to cells and should be disposed of

properly. Avoid repeated freeze-thaw cycles.

## Clonality

Polyclonal

## Ig Type

Rabbit IgG

## Applications

ELISA, WB

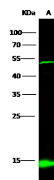
## Dilutions

WB: 5-10 µg/ml

ELISA: 0.1-0.2 µg/mL

This antibody can be used at 0.1-0.2 µg/mL with the appropriate secondary reagents to detect Human IL32. The detection limit for Human IL32 is < 0.039 ng/well.

## Validations



Lanes	
Items	A
Sample (Membrane Lysate)	Jurkat
Sample Volume (µg/lane)	30
Gel	13% SDS-PAGE reducing gel
Recommended Concentration	5-10 µg/ml
Secondary Antibody	Dylight 800 labeled Antibody to Rabbit IgG (H+L) at 1:5000 dilution.
Developed using Odyssey imaging system.	
Explanation	Predicted band size : 27 kDa Observed band size : 27 kDa Additional bands at : 53 kDa (We are unsure as to the identity of these extra bands. They are possible non-specific bindings).

IL32 Antibody, Rabbit PAb, Antigen Affinity Purified, Western blot