

Pinin antibody

Catalog Number: 113909

Product name

Pinin antibody

IP: 1:200-1:1000

IHC: 1:20-1:200

Specificity

Human; other species not tested.

IF: 1:10-1:100

Antibody description

Pinin Rabbit Polyclonal antibody. Positive WB detected in HeLa cells, HepG2 cells, HT-1080 cells. Positive IP detected in HeLa cells. Positive IHC detected in human kidney tissue. Positive IF detected in HepG2 cells. Observed molecular weight by Western-blot: 82 kDa,140 kDa

Preparation

This antibody was obtained by immunization of Pinin recombinant protein (Accession Number: NM_002687). Purification method: Antigen affinity purified.

Formulation

PBS with 0.02% sodium azide and 50% glycerol pH 7.3.

Storage

Store at -20°C. DO NOT ALIQUOT

Clonality

Polyclonal

Ig Type

Rabbit IgG

Applications

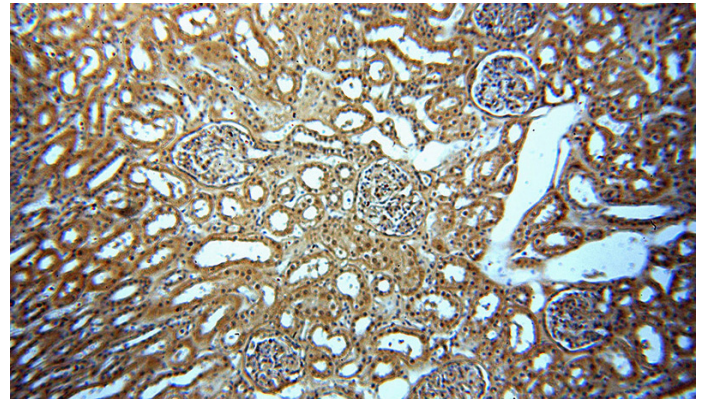
ELISA, IHC, IF, WB, IP

Dilutions

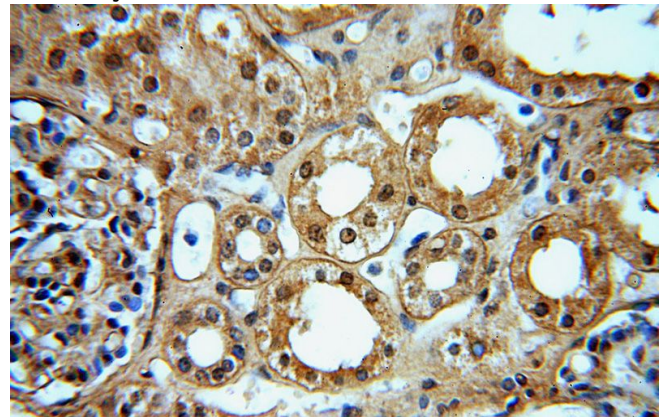
Recommended Dilution:

WB: 1:200-1:2000

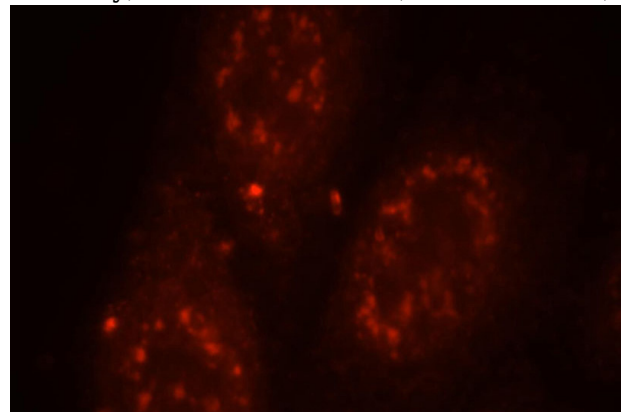
Validations



Immunohistochemical of paraffin-embedded human kidney using Catalog No:113909(PNN antibody) at dilution of 1:50 (under 10x lens)



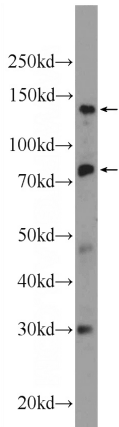
Immunohistochemical of paraffin-embedded human kidney using Catalog No:113909(PNN antibody) at dilution of 1:50 (under 40x lens)



Pinin antibody

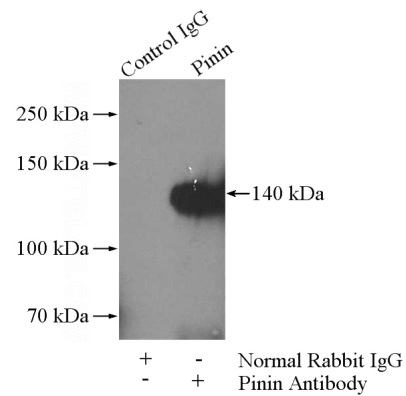
Catalog Number: 113909

Immunofluorescent analysis of HepG2 cells, using PNN antibody Catalog No:113909 at 1:25 dilution and Rhodamine-labeled goat anti-rabbit IgG (red).



HeLa cells were subjected to SDS PAGE followed

by western blot with Catalog No:113909(PNN Antibody) at dilution of 1:600



IP Result of anti-PNN (IP:Catalog No:113909, 4ug; Detection:Catalog No:113909 1:300) with HeLa cells lysate 520ug.