

# GCM2 antibody



Catalog Number: 110909

---

## Product name

GCM2 antibody

## Specificity

Human, Mouse; other species not tested.

## Antibody description

GCM2 Rabbit Polyclonal antibody. Positive WB detected in HEK-293 cells, human brain tissue, mouse kidney tissue. Observed molecular weight by Western-blot: 50-56 kDa

## Preparation

This antibody was obtained by immunization of GCM2 recombinant protein (Accession Number: NM\_004752). Purification method: Antigen affinity purified.

## Formulation

PBS with 0.02% sodium azide and 50% glycerol pH 7.3.

## Storage

Store at -20°C. DO NOT ALIQUOT

## Clonality

Polyclonal

## Ig Type

Rabbit IgG

## Applications

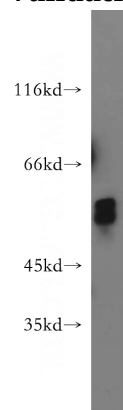
ELISA, WB

## Dilutions

Recommended Dilution:

WB: 1:500-1:5000

## Validations



HEK-293 cells were subjected to SDS PAGE followed by western blot with Catalog No:110909(GCM2 antibody) at dilution of 1:500