

# RAD1 antibody

Catalog Number: 114509

## Product name

RAD1 antibody

IP: 1:200-1:1000

IHC: 1:20-1:200

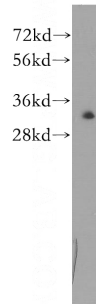
## Specificity

Human, Mouse, Rat; other species not tested.

## Antibody description

RAD1 Rabbit Polyclonal antibody. Positive WB detected in HeLa cells. Positive IP detected in HeLa cells. Positive IHC detected in human lymphoma tissue. Observed molecular weight by Western-blot: 32kd

## Validations



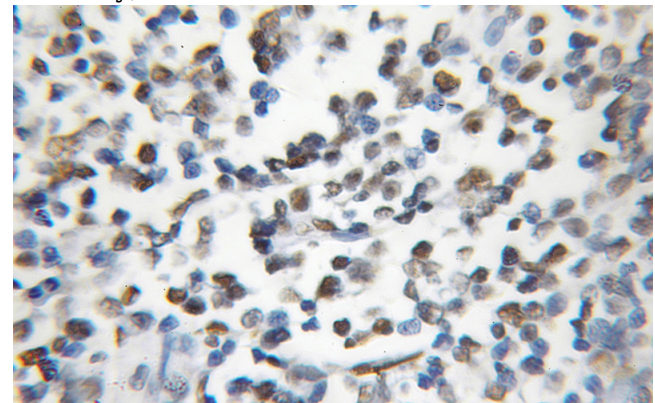
## Preparation

This antibody was obtained by immunization of RAD1 recombinant protein (Accession Number: NM\_002853). Purification method: Antigen affinity purified.

HeLa cells were subjected to SDS PAGE followed by western blot with Catalog No:114509(RAD1 antibody) at dilution of 1:300

## Formulation

PBS with 0.1% sodium azide and 50% glycerol pH 7.3.



## Storage

Store at -20°C. DO NOT ALIQUOT

## Clonality

Polyclonal

Immunohistochemical of paraffin-embedded human lymphoma using Catalog No:114509(RAD1 antibody) at dilution of 1:50 (under 10x lens)

## Ig Type

Rabbit IgG

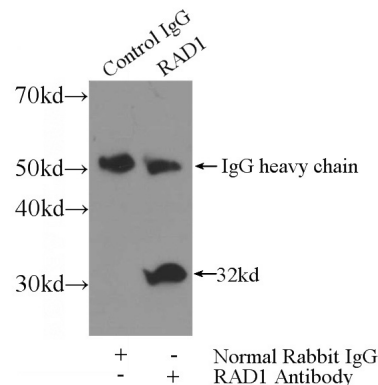
## Applications

ELISA, WB, IHC, IP

## Dilutions

Recommended Dilution:

WB: 1:200-1:2000



IP Result of anti-RAD1 (IP:Catalog No:114509, 3ug; Detection:Catalog No:114509 1:300) with

# **RAD1 antibody**



Catalog Number: 114509

---

HeLa cells lysate 3200ug.