

Anti-DGCR8 antibody



Catalog Number: 142509

Product name

Anti-DGCR8 antibody

Specificity

Human DGCR8

Antibody description

Rabbit Polyclonal to Human DGCR8

Preparation

Produced in rabbits immunized with a synthetic peptide corresponding to the C-terminus of the Human DGCR8, and purified by antigen affinity chromatography.

Formulation

0.2 µm filtered solution in PBS

Storage

This antibody can be stored at 2°C-8°C for one month without detectable loss of activity. Antibody products are stable for twelve months from date of receipt when stored at -20°C to -80°C.

Preservative-Free.

Sodium azide is recommended to avoid contamination (final concentration 0.05%-0.1%). It

is toxic to cells and should be disposed of properly. Avoid repeated freeze-thaw cycles.

Clonality

Polyclonal

Ig Type

Rabbit IgG

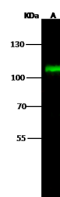
Applications

WB

Dilutions

WB: 5-20 µg/ml

Validations



Lanes	A
Items	
Sample (whole cell lysate)	293T
Sample Volume (µg/lane)	30
Gel	7.5% SDS-PAGE reducing gel
Recommended Concentration	5-20 µg/ml
Secondary Antibody	Dylight 800-labeled Antibody to Rabbit IgG (H+L), at 1:5000 dilution.
Developed using Odyssey imaging system.	
Explanation	Predicted band size : 86 kDa Observed band size : 106 kDa

Human DGCR8 Western blot (WB) 14613