

## General Information

### Gene Name Synonym

6Ckine; Beta-chemokine exodus-2; Secondary lymphoid-tissue chemokine; Small-inducible cytokine A21

### Protein Construction

A DNA sequence encoding the human CCL21 (O00585) (Met 1-Pro 134) was expressed and purified.

### Organism

Human

### Expression Host

Baculovirus-Insect Cells

## QC Testing

### Activity

Measured by its binding ability in a functional ELISA. Immobilized human CCL21 at 2 µg/ml (100 µl/well) can bind human IGFBP7 with a linear rangel of 0.16-4 µg/ml.

### Purity

> 98 % as determined by SDS-PAGE

### Endotoxin

< 1.0 EU per µg of the protein as determined by the LAL method

### Stability

Samples are stable for up to twelve months from date of receipt at -70°C

### Predicted N terminal

Ser 24

### Molecular Mass

The secreted recombinant human CCL21 consists of 111 amino acids and predicts a molecular mass of 12.3 kDa. It migrates as an approximately 18 kDa band in SDS-PAGE under reducing conditions.

### Formulation

Lyophilized from sterile 40mM Tris, 0.3 M NaCl, pH 7.4

1. 5 % trehalose and mannitol are added as protectants before lyophilization.
2. Please contact us for any concerns or special requirements.

## Usage Guide

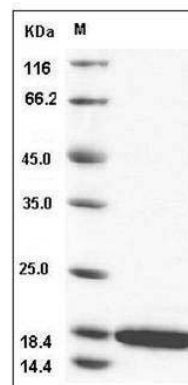
### Storage

Store it under sterile conditions at -20°C to -80°C. It is recommended that the protein be aliquoted for optimal storage. Avoid repeated freeze-thaw cycles.

### Reconstitution

Adding sterile water, prepare a stock solution of 0.25 mg/ml. Concentration is measured by UV-Vis.

### SDS-PAGE



Human CCL21 / 6Ckine Protein SDS-PAGE