

Albumin antibody



Catalog Number: 107109

Product name

Albumin antibody

IP: 1:2000-1:20000

IHC: 1:20-1:200

Specificity

Human; other species not tested.

IF: 1:20-1:200

Antibody description

Albumin Mouse Monoclonal antibody. Positive IF detected in HepG2 cells. Positive IHC detected in human liver tissue. Positive IP detected in HepG2 cells. Positive WB detected in human plasma tissue, human liver tissue. Observed molecular weight by Western-blot: 66 kDa

Preparation

This antibody was obtained by immunization of Albumin recombinant protein (Accession Number: NM_000477). Purification method: Protein G purified.

Formulation

PBS with 0.02% sodium azide and 50% glycerol pH 7.3.

Storage

Store at -20°C. DO NOT ALIQUOT

Clonality

Monoclonal

Ig Type

Mouse IgG1

Applications

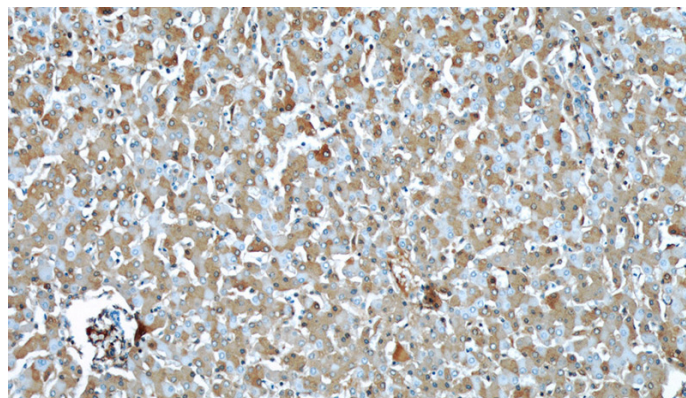
ELISA, IHC, IF, WB, IP

Dilutions

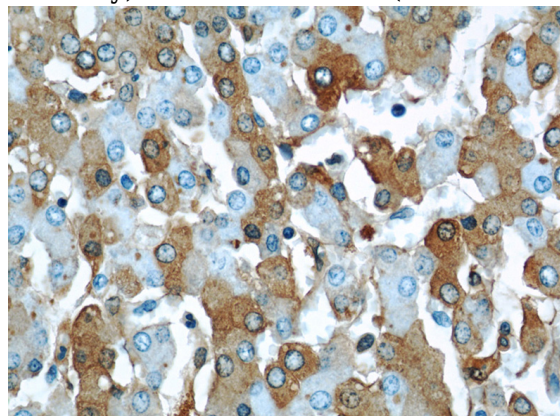
Recommended Dilution:

WB: 1:5000-1:50000

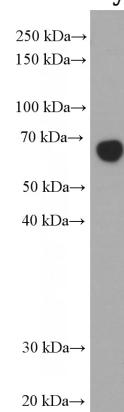
Validations



Immunohistochemical of paraffin-embedded human liver using Catalog No:107569(ALB antibody) at dilution of 1:50 (under 10x lens)



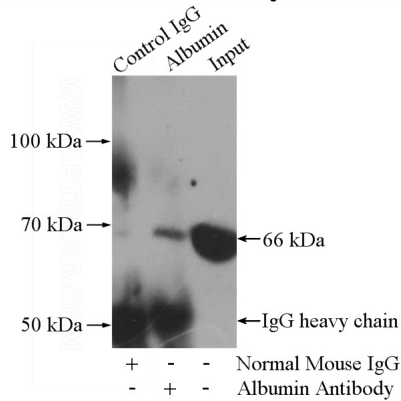
Immunohistochemical of paraffin-embedded human liver using Catalog No:107569(ALB antibody) at dilution of 1:50 (under 40x lens)



Albumin antibody

Catalog Number: 107109

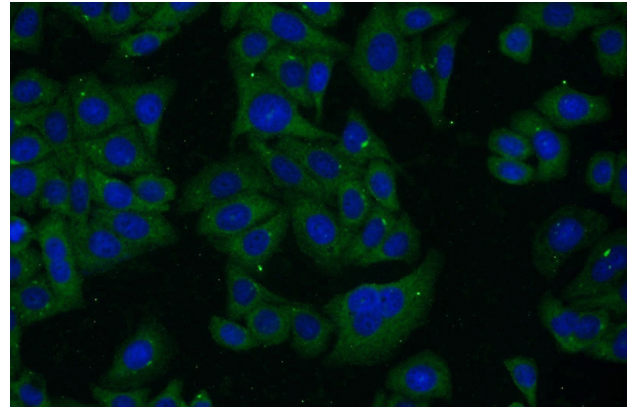
human plasma (diluted 5000 fold) was subjected to SDS PAGE followed by western blot with Catalog No:107569 (Albumin Antibody) at dilution



of 1:10000

IP Result of anti-Albumin (IP:Catalog No:107569, 5ug; Detection:Catalog No:107569 1:5000) with

HepG2 cells lysate 1800ug.



Immunofluorescent analysis of HepG2 cells using Catalog No:107569(Albumin Antibody) at dilution of 1:50 and Alexa Fluor 488-conjugated AffiniPure Goat Anti-Mouse IgG(H+L)