

Anti-eIF4G1 Rabbit antibody



Catalog Number: 167109

Product name

Anti-eIF4G1 Rabbit antibody

Specificity

Human, Mouse, Rat

Antibody description

eIF4G1 Rabbit polyclonal antibody

Preparation

Antigen: Peptide sequence around aa.1230~1234 (P-V-S-P-L) derived from Human eIF4G.

Formulation

Supplied at 1.0mg/mL in phosphate buffered saline (without Mg²⁺ and Ca²⁺), pH 7.4, 150mM NaCl, 0.02% sodium azide and 50% glycerol.

Storage

Store at 4°C short term. Store at -20°C long term. Avoid freeze / thaw cycle.

Clonality

Polyclonal

Ig Type

Rabbit IgG

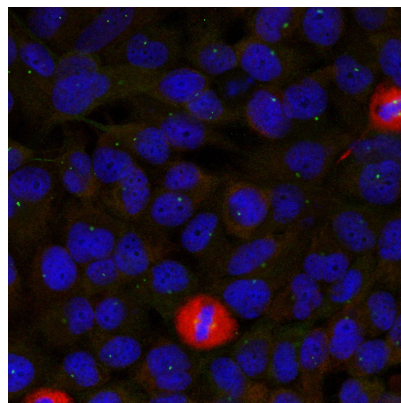
Applications

WB, IHC-P, ICC/IF

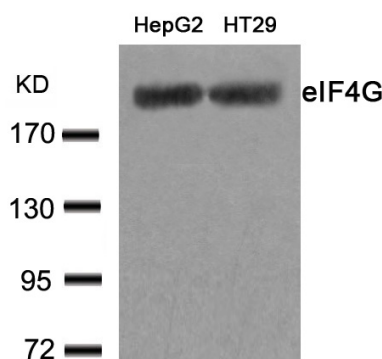
Dilutions

WB:1/1000 ICC:1/100-1/200 IHC:1/50-1/100

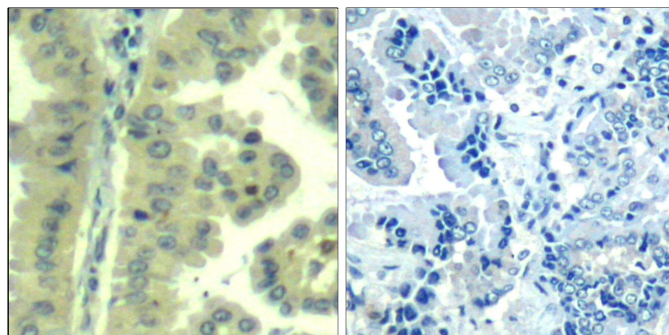
Validations



Immunofluorescence staining of methanol-fixed HeLa cells using eIF4G (Ab-1232) Antibody .



Western blot analysis of extracts from HepG2 and HT29 cells using eIF4G (Ab-1232) rabbit pAb (dilution 1:1000). Predicted band size: 220 kDa. Observed band size: 220 kDa.



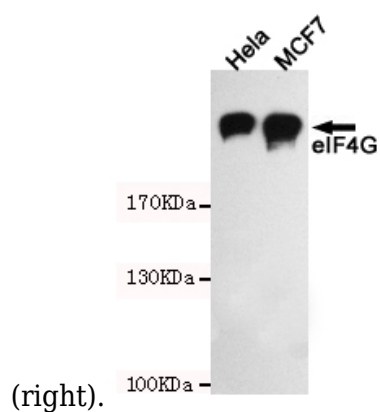
Immunohistochemical analysis of paraffin-embedded human lung carcinoma tissue using eIF4G (Ab-1232) Antibody (left) or the same antibody preincubated with blocking peptide

Anti-eIF4G1 Rabbit antibody



Catalog Number: 167109

Western blot analysis of extracts from HeLa and MCF7 cells using eIF4G (Ab-1232) rabbit pAb (dilution 1:1000). Predicted band size: 220KDa. Observed band size: 220KDa.



(right).