

Anti-NPHS2 antibody



Catalog Number: 142109

Product name

Anti-NPHS2 antibody

Specificity

Human NPHS2

Antibody description

Rabbit Polyclonal to Human NPHS2

Preparation

Produced in rabbits immunized with a synthetic peptide corresponding to the C-terminus of the Human NPHS2, and purified by antigen affinity chromatography.

Formulation

0.2 µm filtered solution in PBS

Storage

This antibody can be stored at 2°C-8°C for one month without detectable loss of activity. Antibody products are stable for twelve months from date of receipt when stored at -20°C to -80°C.

Preservative-Free.

Sodium azide is recommended to avoid contamination (final concentration 0.05%-0.1%). It is toxic to cells and should be disposed of properly. Avoid repeated freeze-thaw cycles.

Clonality

Polyclonal

Ig Type

Rabbit IgG

Applications

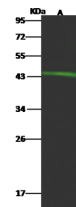
IP

Dilutions

WB: 5-20 µg/ml

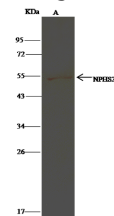
IP: 4-8 µl/mg of lysate

Validations



Lanes		A
Items	Sample	HepG2
	Sample Volume (whole cell lysate)	
	Sample Volume (µg/lane)	30
	Gel	13% SDS-PAGE reducing gel
	Recommended Concentration	5-20 µg/ml
	Secondary Antibody	Dylight 800-labeled Antibody to Rabbit IgG (H+L), at 1:5000 dilution.
Developed using Odyssey imaging system.		
Explanation	Predicted band size : 42 kDa Observed band size : 44 kDa	

NPHS2 Antibody, Rabbit PAb, Antigen Affinity



Lanes		A
Items	Sample	A431
	Sample quantity (whole cell lysate)	0.5 mg
	IP antibody quantity	4 µl
	Protein G agarose	1.5 µl of 50% Protein G agarose
	Gel	13% SDS-PAGE reducing gel
	Primary antibody	KLJF-SMCC-sinoA2166+KLJF-SMCC-sinoA2168 antibody at 10 µg/ml
	Secondary antibody	Clean-Block IP Detection Reagent (HRP) at 1:500 dilution

Purified, Western blot

NPHS2 Antibody, Rabbit PAb, Antigen Affinity

Purified, Immunoprecipitation