

Anti-DDX21 Rabbit antibody



Catalog Number: 166809

Product name

Anti-DDX21 Rabbit antibody

Specificity

Human

Antibody description

DDX21 Rabbit polyclonal antibody

Preparation

Antigen: A synthetic peptide of human DDX21

Formulation

Supplied in 50nM Tris-Glycine(pH 7.4), 0.15M NaCl, 40%Glycerol, 0.01% sodium azide and 0.05% BSA.

Storage

Store at -20°C. Stable for 12 months from date of receipt.

Clonality

Polyclonal

Ig Type

Rabbit IgG

Applications

WB, IHC-P, ICC/IF

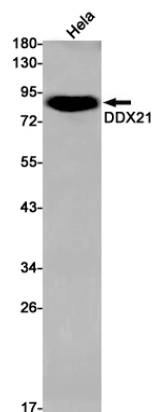
Dilutions

WB: 1/1000

IHC: 1/20

ICC/IF: 1/100

Validations



Western blot detection of DDX21 in HeLa cell lysates using DDX21 Rabbit pAb(1:1000 diluted). Predicted band size:87kDa.Observed band size:87kDa.