

# MRPL10 antibody



Catalog Number: 112809

## Product name

MRPL10 antibody

## Immunogen

[Human MRPL10 Recombinant protein \(GST tag\)](#)

## Specificity

human, mouse, rat; other species not tested.

## Antibody description

MRPL10 Rabbit Polyclonal antibody. Positive IF detected in HepG2. Positive IHC detected in human testis. Positive WB detected in HEK-293 cells, HeLa cells. Observed molecular weight by Western-blot: 29kd

## Preparation

This antibody was obtained by immunization of MRPL10 recombinant protein (Accession Number: NM\_145255). Purification method: Antigen affinity purified.

## Formulation

PBS with 0.02% sodium azide and 50% glycerol pH 7.3.

## Storage

Store at -20°C. DO NOT ALIQUOT

## Clonality

Polyclonal

## Ig Type

Rabbit IgG

## Applications

ELISA, WB, IHC, IF

## Dilutions

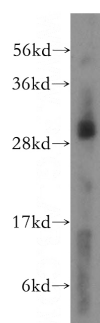
Recommended Dilution:

WB: 1:200-1:2000

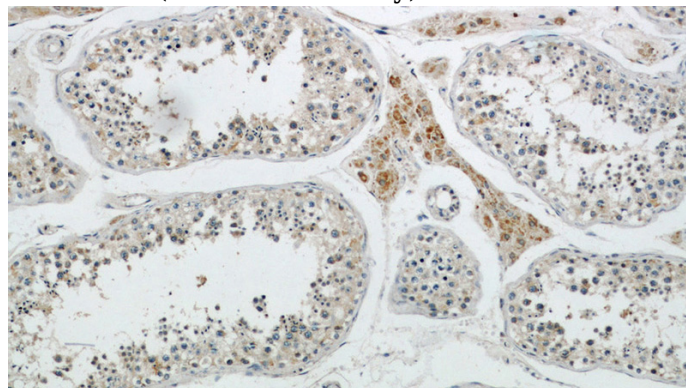
IHC: 1:20-1:200

IF: 1:10-1:100

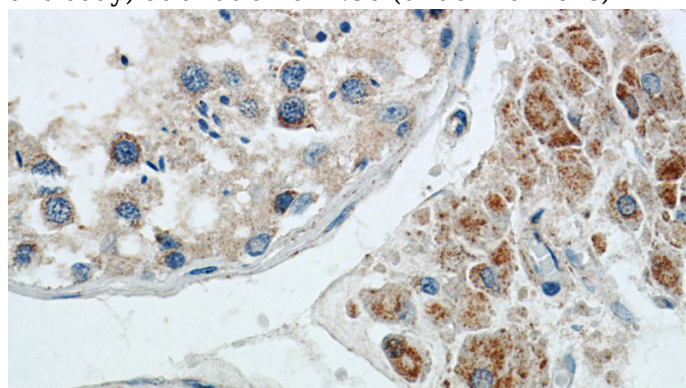
## Validations



HEK-293 cells were subjected to SDS PAGE followed by western blot with Catalog No:112809(MRPL10 antibody) at dilution of 1:500



Immunohistochemical of paraffin-embedded human testis using Catalog No:112809(MRPL10 antibody) at dilution of 1:50 (under 10x lens)



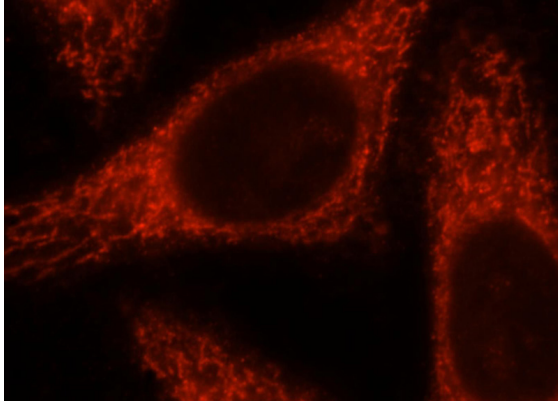
# MRPL10 antibody



Catalog Number: 112809

---

Immunohistochemical of paraffin-embedded human testis using Catalog No:112809(MRPL10 antibody) at dilution of 1:50 (under 40x lens)



Immunofluorescent analysis of HepG2 cells, using MRPL10 antibody Catalog No:112809 at 1:25 dilution and Rhodamine-labeled goat anti-rabbit IgG (red).