

SLMAP antibody



Catalog Number: 115409

Product name

SLMAP antibody

Clonality

Polyclonal

Immunogen

[Human SLMAP Recombinant protein \(His tag\)](#)

Ig Type

Rabbit IgG

Specificity

Human, Mouse; other species not tested.

Applications

ELISA, WB

Antibody description

SLMAP Rabbit Polyclonal antibody. Positive WB detected in mouse heart tissue, A431 cells, mouse skeletal muscle tissue. Observed molecular weight by Western-blot: 35, 45, 63-66, 83-91 kDa

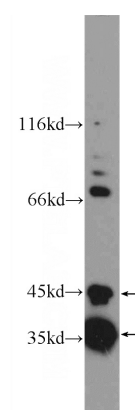
Dilutions

Recommended Dilution:
WB: 1:200-1:2000

Preparation

This antibody was obtained by immunization of SLMAP recombinant protein (Accession Number: NM_001304420). Purification method: Antigen affinity purified.

Validations



Formulation

PBS with 0.1% sodium azide and 50% glycerol pH 7.3.

Storage

Store at -20°C. DO NOT ALIQUOT

mouse heart tissue were subjected to SDS PAGE followed by western blot with Catalog No:115409(SLMAP Antibody) at dilution of 1:600