

LYPLA1 antibody



Catalog Number: 112409

Product name

LYPLA1 antibody

WB: 1:500-1:5000

IP: 1:200-1:2000

Specificity

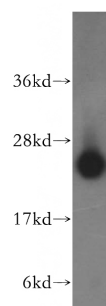
Human, Mouse, Rat; other species not tested.

IHC: 1:20-1:200

Antibody description

LYPLA1 Rabbit Polyclonal antibody. Positive IHC detected in human colon cancer tissue. Positive WB detected in HeLa cells, human brain tissue, human liver tissue, mouse brain tissue, rat brain tissue, rat liver tissue. Positive IP detected in mouse brain tissue. Observed molecular weight by Western-blot: 25 kDa

Validations



Preparation

This antibody was obtained by immunization of LYPLA1 recombinant protein (Accession Number: NM_006330). Purification method: Antigen affinity purified.

HeLa cells were subjected to SDS PAGE followed by western blot with Catalog No:112409(LYPLA1 antibody) at dilution of 1:500

Formulation

PBS with 0.02% sodium azide and 50% glycerol pH 7.3.

Storage

Store at -20°C. DO NOT ALIQUOT

Clonality

Polyclonal

Ig Type

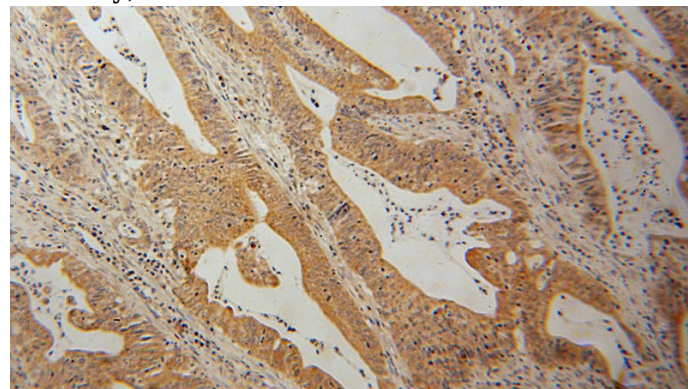
Rabbit IgG

Applications

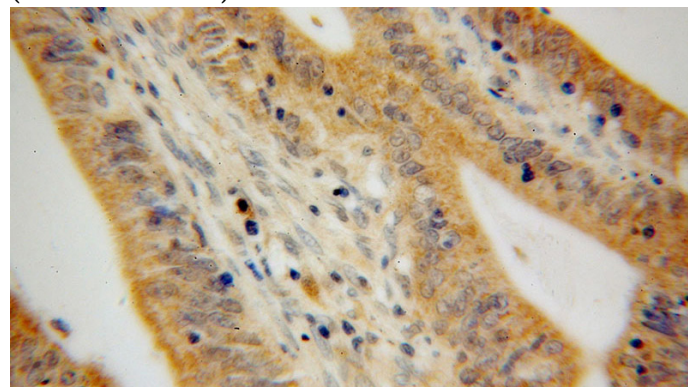
ELISA, WB, IHC, IP

Dilutions

Recommended Dilution:



Immunohistochemical of paraffin-embedded human colon cancer using Catalog No:112409(LYPLA1 antibody) at dilution of 1:100 (under 10x lens)

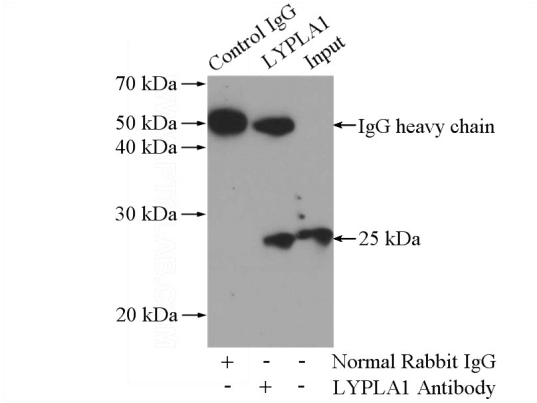


LYPLA1 antibody



Catalog Number: 112409

Immunohistochemical of paraffin-embedded human colon cancer using Catalog No:112409(LYPLA1 antibody) at dilution of 1:100 (under 40x lens)



IP Result of anti-LYPLA1 (IP:Catalog No:112409, 4ug; Detection:Catalog No:112409 1:500) with mouse brain tissue lysate 4000ug.