

# Cytokeratin 1-specific antibody



Catalog Number: 107009

## Product name

Cytokeratin 1-specific antibody

IP: 1:200-1:2000

IHC: 1:20-1:200

## Specificity

Human, Mouse; other species not tested.

IF: 1:20-1:200

## Antibody description

Cytokeratin 1-specific Rabbit Polyclonal antibody. Positive IHC detected in human skin tissue, human cervix tissue, human lung cancer tissue. Positive IF detected in A431 cells. Positive IP detected in A431 cells. Positive WB detected in mouse skin tissue, A375 cells, A431 cells. Observed molecular weight by Western-blot: 67kd

## Preparation

This antibody was obtained by immunization of Peptide (Accession Number: NM\_006121). Purification method: Antigen affinity purified.

## Formulation

PBS with 0.02% sodium azide and 50% glycerol pH 7.3.

## Storage

Store at -20°C. DO NOT ALIQUOT

## Clonality

Polyclonal

## Ig Type

Rabbit IgG

## Applications

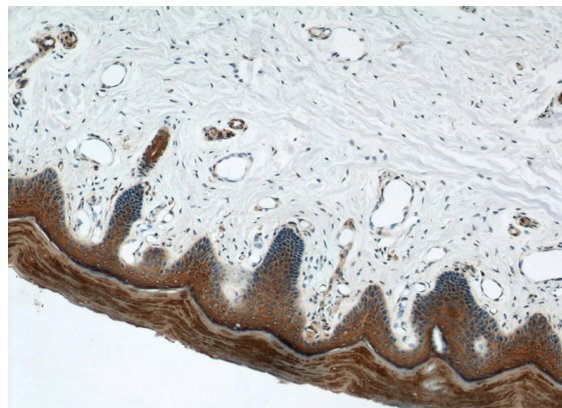
ELISA, IP, IF, WB, IHC

## Dilutions

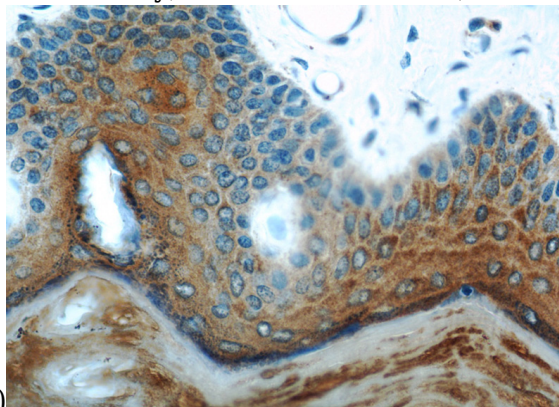
Recommended Dilution:

WB: 1:500-1:5000

## Validations

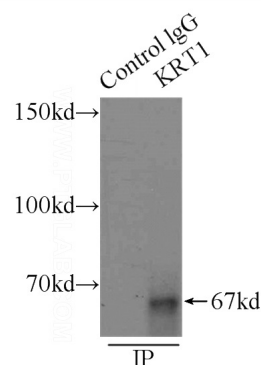


Immunohistochemical of paraffin-embedded human skin using Catalog No:109804(KRT1-specific antibody) at dilution of 1:100 (under 10x



lens)

Immunohistochemical of paraffin-embedded human skin using Catalog No:109804(KRT1-specific antibody) at dilution of 1:100 (under 40x



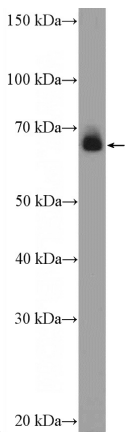
lens)

# Cytokeratin 1-specific antibody



Catalog Number: 107009

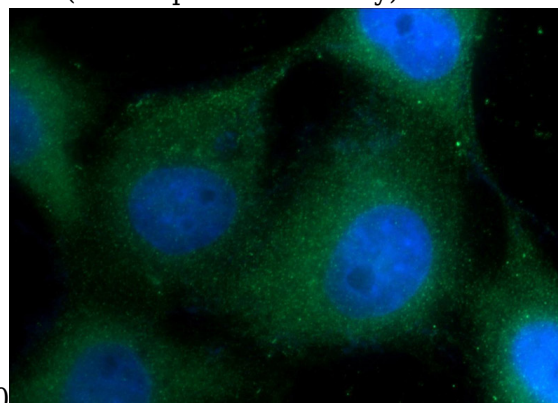
IP Result of anti-KRT1-specific (IP:Catalog No:109804, 3ug; Detection:Catalog No:109804



1:500) with A431 cells lysate 3500ug.

mouse skin tissue were subjected to SDS PAGE followed by western blot with Catalog

No:109804(KRT1-specific Antibody) at dilution of



1:1000

Immunofluorescent analysis of A431 cells using Catalog No:109804(KRT1-specific Antibody) at dilution of 1:50 and Alexa Fluor 488-conjugated AffiniPure Goat Anti-Rabbit IgG(H+L)