

Anti-CES3/Carboxylesterase 3 antibody



Catalog Number: 104009

Product name

Monoclonal

Anti-CES3/Carboxylesterase 3 antibody

Ig Type

Specificity

Rabbit IgG

Human CES3 / Carboxylesterase 3

Applications

Antibody description

ELISA, WB

Rabbit monoclonal to CES3/Carboxylesterase 3

Dilutions

Preparation

WB: 5-10 µg/mL

This antibody was obtained from a rabbit immunized with purified, recombinant Human CES3 / Carboxylesterase 3 (rh CES3 / Carboxylesterase 3; NP_079198.2; Met 1-Glu 561).

ELISA: 0.1-0.2 µg/mL

Formulation

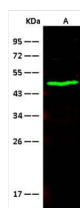
This antibody can be used at 0.1-0.2 µg/mL with the appropriate secondary reagents to detect Human CES3. The detection limit for Human CES3 is approximately 0.0195 ng/well.

0.2 µm filtered solution in PBS with 5% trehalose

Storage

Validations

This antibody can be stored at 2°C-8°C for one month without detectable loss of activity. Antibody products are stable for twelve months from date of receipt when stored at -20°C to -80°C.



Preservative-Free.

Sodium azide is recommended to avoid contamination (final concentration 0.05%-0.1%). It is toxic to cells and should be disposed of properly. Avoid repeated freeze-thaw cycles.

Items	Lanes
Sample (whole cell lysate)	HeLa
Sample Volume (cells/lane)	2.5 × 10 ⁶
Gel	13% SDS-PAGE reducing gel
Recommended Concentration	5-10 µg/ml
Secondary Antibody	Dylight 800 labeled Antibody To Rabbit IgG (H+L), at 1:5000 dilution.

Clonality

CES3 / Carboxylesterase 3 Antibody, Rabbit MAb, Western blot