

# Anti-B7-H3/CD276 antibody



Catalog Number: 101009

## Product name

Anti-B7-H3/CD276 antibody

## Immunogen

[Mouse B7-H3/CD276 \(His Tag\) recombinant protein](#)

## Specificity

Mouse B7-H3 / CD276

## Antibody description

Rabbit polyclonal to B7-H3/CD276

## Preparation

Produced in rabbits immunized with purified, recombinant Mouse B7-H3 / CD276 (rh B7-H3 / CD276; NP\_598744.1; Met1-Phe244). B7-H3 / CD276 specific IgG was purified by Mouse B7-H3 / CD276 affinity chromatography.

## Formulation

0.2 µm filtered solution in PBS

## Storage

This antibody can be stored at 2°C-8°C for one month without detectable loss of activity. Antibody products are stable for twelve months from date of receipt when stored at -20°C to -80°C.

Preservative-Free.

Sodium azide is recommended to avoid contamination (final concentration 0.05%-0.1%). It is toxic to cells and should be disposed of properly. Avoid repeated freeze-thaw cycles.

## Clonality

Polyclonal

## Ig Type

Rabbit IgG

## Applications

ELISA, WB, IP

## Dilutions

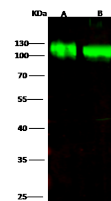
WB: 2-10 µg/ml

ELISA: 0.1-0.2 µg/mL

This antibody can be used at 0.1-0.2 µg/mL with the appropriate secondary reagents to detect Mouse B7-H3 / CD276. The detection limit for Mouse B7-H3 / CD276 is < 0.039 ng/well.

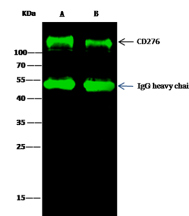
IP: 1-4 µg/mg of lysate

## Validations



Items	Lanes	A	B
Sample		MCF7	293T
Membrane (lysate)			
Sample Volume (µg/lane)		30	30
Gel		13% SDS-PAGE reducing gel	
Recommended Concentration		2.10µg/ml	
Secondary Antibody		Dylight 800 labeled Antibody to Rabbit IgG (H+L), at 1:5000 dilution.	
Developed using Odyssey imaging system.			
Explanation		Predicted band size: 57 kDa Observed band size: 115 kDa	

B7-H3 / CD276 Antibody, Rabbit PAb, Antigen Affinity Purified, Western blot



Items	Lanes	A	B
Sample (whole-cell lysate)		MCF-7	293T
Sample quantity		0.5 mg	
IP antibody quantity		2 µg	
Protein G agarose		15 µl of 50% Protein G Agarose	
Gel		13% SDS-PAGE reducing gel	
Primary antibody		mCD276 antibody at 2 µg/ml	
Secondary antibody		Dylight 800-labeled antibody to rabbit IgG (H+L), at 1:5000 dilution.	

B7-H3 / CD276 Antibody, Rabbit PAb, Antigen Affinity Purified, Immunoprecipitation