

# RP2 antibody



Catalog Number: 114791

## Product name

RP2 antibody

WB: 1:500-1:5000

IP: 1:200-1:2000

## Specificity

Human, Mouse, Rat; other species not tested.

IHC: 1:20-1:200

## Antibody description

RP2 Rabbit Polyclonal antibody. Positive IP detected in Y79 cells. Positive WB detected in Jurkat cells, HepG2 cells, mouse liver tissue, Y79 cells. Positive IHC detected in human liver cancer tissue. Positive FC detected in HeLa cells. Observed molecular weight by Western-blot: 40-43 kDa

## Preparation

This antibody was obtained by immunization of RP2 recombinant protein (Accession Number: NM\_006915). Purification method: Antigen affinity purified.

## Formulation

PBS with 0.02% sodium azide and 50% glycerol pH 7.3.

## Storage

Store at -20°C. DO NOT ALIQUOT

## Clonality

Polyclonal

## Ig Type

Rabbit IgG

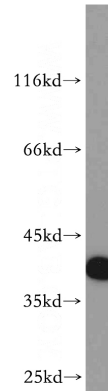
## Applications

ELISA, WB, IHC, FC, IP

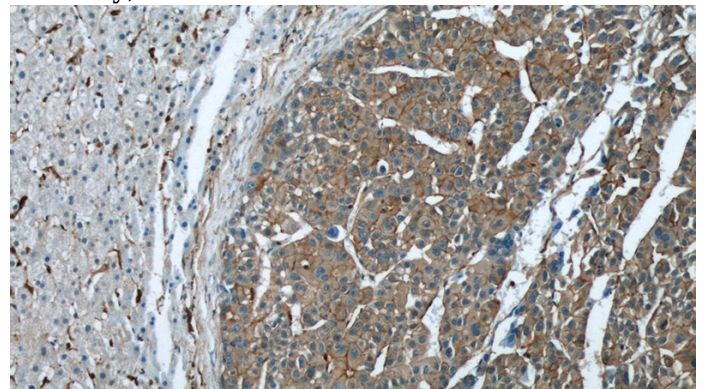
## Dilutions

Recommended Dilution:

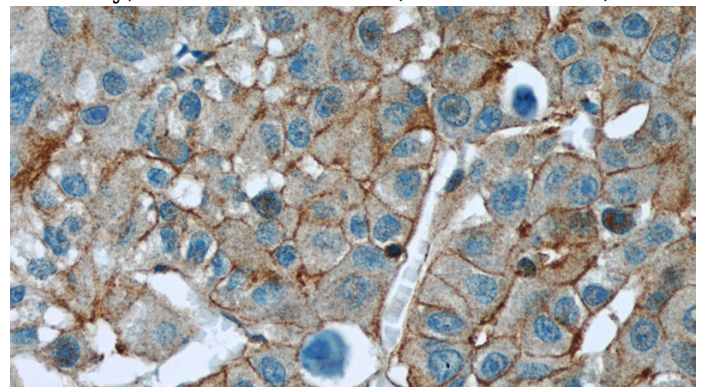
## Validations



Jurkat cells were subjected to SDS PAGE followed by western blot with Catalog No:114791(RP2 antibody) at dilution of 1:500



Immunohistochemical of paraffin-embedded human liver cancer using Catalog No:114791(RP2 antibody) at dilution of 1:50 (under 10x lens)

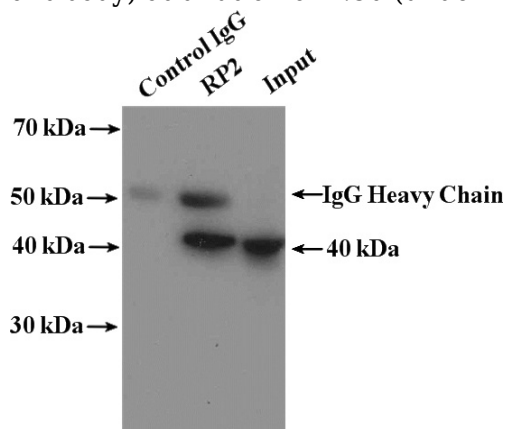


Immunohistochemical of paraffin-embedded

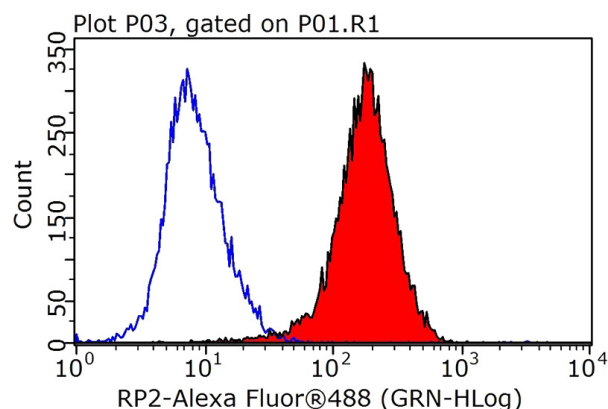
# RP2 antibody

Catalog Number: 114791

human liver cancer using Catalog No:114791(RP2 antibody) at dilution of 1:50 (under 40x lens)



IP Result of anti-RP2 (IP:Catalog No:114791, 4ug; Detection:Catalog No:114791 1:500) with Y79 cells lysate 2000ug.



$1 \times 10^6$  HeLa cells were stained with 0.2ug RP2 antibody (Catalog No:114791, red) and control antibody (blue). Fixed with 90% MeOH blocked with 3% BSA (30 min). Alexa Fluor 488-conjugated AffiniPure Goat Anti-Rabbit IgG(H+L) with dilution 1:1000.