

# MTO1 antibody

Catalog Number: 112791

---

## Product name

MTO1 antibody

## Specificity

human, mouse, rat; other species not tested.

## Antibody description

MTO1 Rabbit Polyclonal antibody. Positive WB detected in human liver tissue, Jurkat cells. Observed molecular weight by Western-blot: 70-75kd

## Preparation

This antibody was obtained by immunization of MTO1 recombinant protein (Accession Number: BC005808). Purification method: Antigen affinity purified.

## Formulation

PBS with 0.02% sodium azide and 50% glycerol pH 7.3.

## Storage

Store at -20°C. DO NOT ALIQUOT

## Clonality

Polyclonal

## Ig Type

Rabbit IgG

## Applications

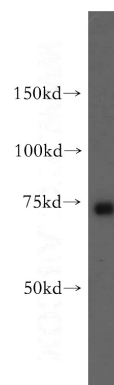
ELISA, WB

## Dilutions

Recommended Dilution:

WB: 1:500-1:5000

## Validations



human liver tissue were subjected to SDS PAGE followed by western blot with Catalog No:112791(MTO1 antibody) at dilution of 1:500