

# Human MMP-2 recombinant protein



Catalog Number: 500791

## General Information

### Protein Construction

A DNA sequence encoding the native human MMP2 (NP\_004521.1) (Met 1-Cys 660) was expressed and purified.

### Organism

Human

### Expression Host

Human Cells

## QC Testing

### Activity

1. Measured by its ability to cleave the fluorogenic peptide substrate Mca-PLGL-Dpa-AR-NH<sub>2</sub> (AnaSpec, Catalog # 27076). The specific activity is > 1,000 pmoles/min/μg.
2. Measured by its binding ability in a functional ELISA.
3. Immobilized human MMP2 at 10 μg/mL (100 μl/well) can bind human TIMP2/Fc (Cat: 503112). The EC<sub>50</sub> of human TIMP2/Fc is 0.02 μg/mL.

### Purity

> (74.7+17.3) % as determined by SDS-PAGE

### Endotoxin

< 1.0 EU per μg of the protein as determined by the LAL method

### Stability

Samples are stable for up to twelve months from date of receipt at -70°C

### Predicted N terminal

Ala 30

### Molecular Mass

The recombinant human MMP2 consists of 631 amino acids and migrates as an 72 kDa band as predicted in SDS-PAGE under reducing conditions.

### Formulation

Lyophilized from sterile 0.05 % Brij-35, 150 mM NaCl, 5 mM CaCl<sub>2</sub>, 50 mM Tris, pH 7.5.

1. 5 % trehalose and mannitol are added as protectants before lyophilization.

2. Please contact us for any concerns or special requirements.

## Usage Guide

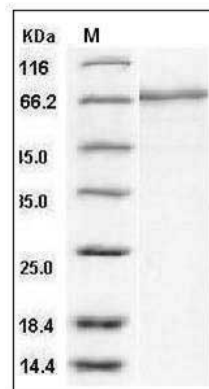
### Storage

Store it under sterile conditions at -20°C to -80°C. It is recommended that the protein be aliquoted for optimal storage. Avoid repeated freeze-thaw cycles.

### Reconstitution

Adding sterile water, prepare a stock solution of 0.25 mg/ml. Concentration is measured by UV-Vis.

### SDS-PAGE



Human MMP-2 / CLG4A Protein SDS-PAGE