

Product name

CLINT1 antibody

WB: 1:500-1:5000

IP: 1:500-1:5000

Specificity

Human, Mouse, Rat; other species not tested.

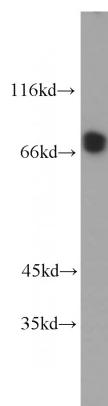
IHC: 1:20-1:200

IF: 1:10-1:100

Antibody description

CLINT1 Rabbit Polyclonal antibody. Positive IHC detected in human breast cancer tissue. Positive IF detected in HepG2 cells. Positive FC detected in HepG2 cells. Positive WB detected in HeLa cells, HEK-293 cells, mouse brain tissue. Positive IP detected in HeLa cells. Observed molecular weight by Western-blot: 68 kDa, 80 kDa

Validations



Preparation

This antibody was obtained by immunization of CLINT1 recombinant protein (Accession Number: NM_014666). Purification method: Antigen affinity purified.

HeLa cells were subjected to SDS PAGE followed by western blot with Catalog No:109391 (CLINT1 antibody) at dilution of 1:1000

Formulation

PBS with 0.1% sodium azide and 50% glycerol pH 7.3.

Storage

Store at -20°C. DO NOT ALIQUOT

Clonality

Polyclonal

Ig Type

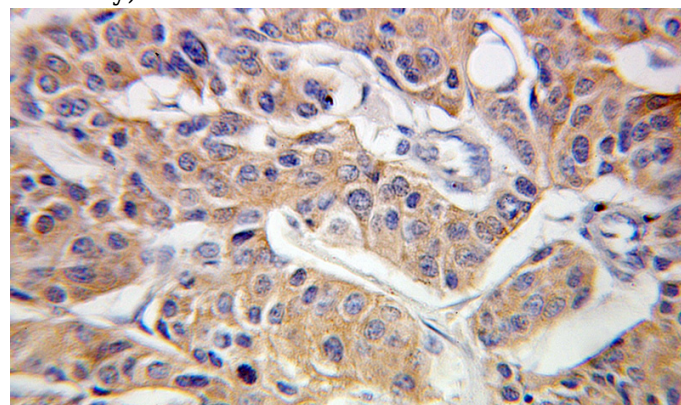
Rabbit IgG

Applications

ELISA, WB, IHC, IF, FC, IP

Dilutions

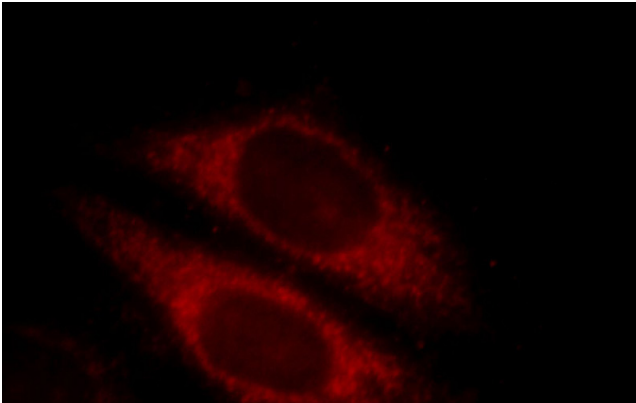
Recommended Dilution:



Immunohistochemical of paraffin-embedded human breast cancer using Catalog No:109391 (CLINT1 antibody) at dilution of 1:100 (under 40x lens)

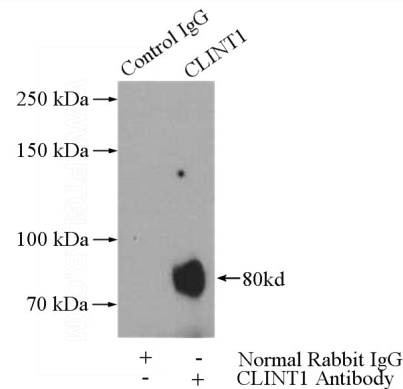
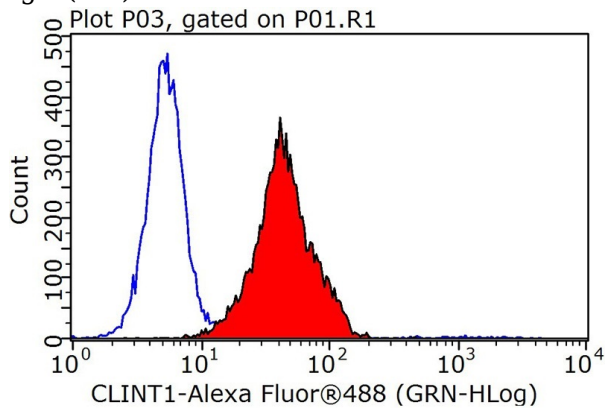
CLINT1 antibody

Catalog Number: 109391



1X10⁶ HepG2 cells were stained with 0.2ug CLINT1 antibody (Catalog No:109391, red) and control antibody (blue). Fixed with 90% MeOH blocked with 3% BSA (30 min). Alexa Fluor 488-conjugated AffiniPure Goat Anti-Rabbit IgG(H+L) with dilution 1:1000.

Immunofluorescent analysis of HepG2 cells, using CLINT1 antibody Catalog No:109391 at 1:25 dilution and Rhodamine-labeled goat anti-rabbit IgG (red).



IP Result of anti-CLINT1 (IP:Catalog No:109391, 4ug; Detection:Catalog No:109391 1:1000) with HeLa cells lysate 2800ug.