

# EPOR antibody

Catalog Number: 110391

## Product name

EPOR antibody

IP: 1:200-1:2000

IF: 1:50-1:500

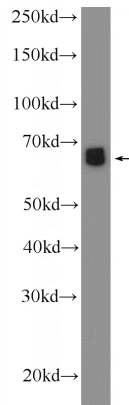
## Specificity

Human, Mouse; other species not tested.

## Validations

## Antibody description

EPOR Rabbit Polyclonal antibody. Positive WB detected in HepG2 cells, A431 cells. Positive IP detected in HepG2 cells. Positive IF detected in HepG2 cells. Positive FC detected in HeLa cells. Observed molecular weight by Western-blot: 66 kDa



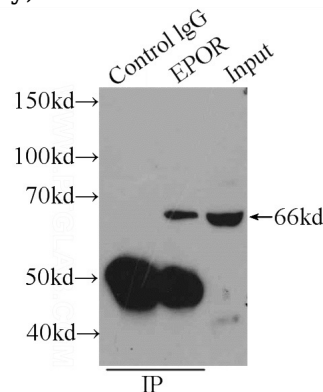
## Preparation

This antibody was obtained by immunization of Peptide (Accession Number: NM\_000121). Purification method: Antigen affinity purified.

HepG2 cells were subjected to SDS PAGE followed by western blot with Catalog No:110391(EPOR Antibody) at dilution of 1:1000

## Formulation

PBS with 0.02% sodium azide and 50% glycerol pH 7.3.



## Storage

Store at -20°C. DO NOT ALIQUOT

IP Result of anti-EPOR (IP:Catalog No:110391, 4ug; Detection:Catalog No:110391 1:500) with HepG2 cells lysate 1920ug.

## Clonality

Polyclonal

## Ig Type

Rabbit IgG

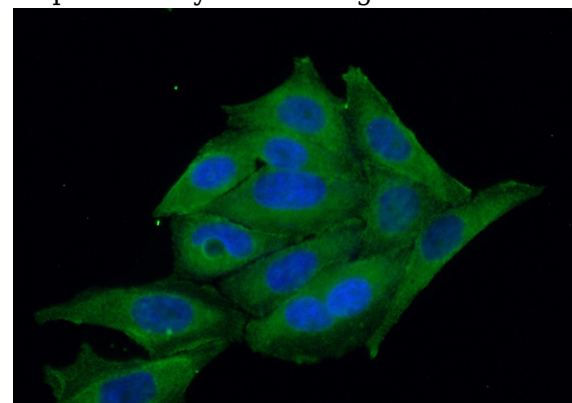
## Applications

ELISA, IP, WB, FC, IF

## Dilutions

Recommended Dilution:

WB: 1:500-1:5000



Immunofluorescent analysis of (10% Formaldehyde) fixed HepG2 cells using Catalog

# EPOR antibody



Catalog Number: 110391

No:110391(EPOR Antibody) at dilution of 1:50 and Alexa Fluor 488-conjugated AffiniPure Goat Anti-Rabbit IgG(H+L)

1X10<sup>6</sup> HeLa cells were stained with 0.2ug EPOR antibody (Catalog No:110391, red) and control antibody (blue). Fixed with 90% MeOH blocked with 3% BSA (30 min). Alexa Fluor 488-conjugated AffiniPure Goat Anti-Rabbit IgG(H+L) with dilution 1:1000.

