

# Anti-TESPA1 antibody



Catalog Number: 176691

## Product name

Anti-TESPA1 antibody

## Specificity

Human, Mouse, Rat

## Antibody description

Rabbit polyclonal antibody to TESPA1

## Preparation

This antigen of this antibody was synthetic peptide within human tespa1 aa 226-270.

## Formulation

Liquid, 1\*PBS (pH7.4), 0.2% BSA, 40% Glycerol.  
Preservative: 0.05% Sodium Azide.

## Storage

Store at +4°C after thawing. Aliquot store at -20°C. Avoid repeated freeze / thaw cycles.

## Clonality

Polyclonal

## Ig Type

Rabbit IgG

## Applications

WB, ICC, IHC-P, FC

## Dilutions

WB: 1:500-1:1,000

ICC: 1:200

IHC-P: 1:50

FC: 1:50-1:100

## Validations

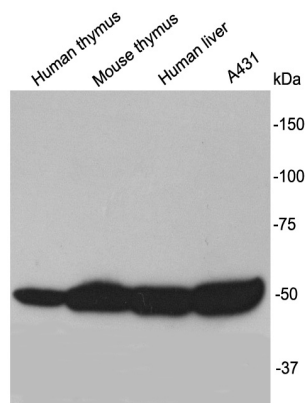
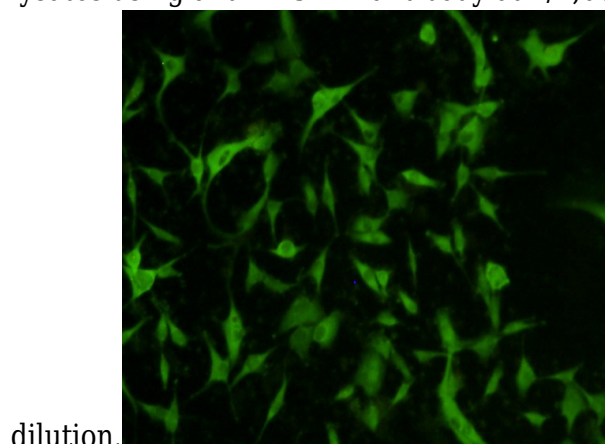


Fig1: Western blot analysis of TESPA1 on different lysates using anti-TESPA1 antibody at 1/1,000



dilution.

Fig2: ICC staining TESPA1 in A172 cells (green). The nuclear counter stain is DAPI (blue). Cells were fixed in paraformaldehyde, permeabilised with 0.25% Triton X100/PBS.

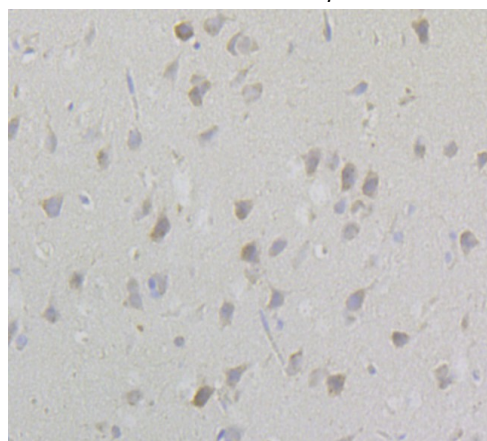


Fig3: Immunohistochemical analysis of paraffin-embedded rat brain tissue using anti-TESPA1 antibody. Counter stained with hematoxylin.

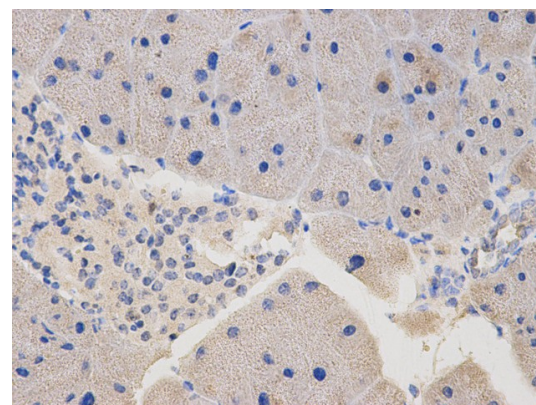
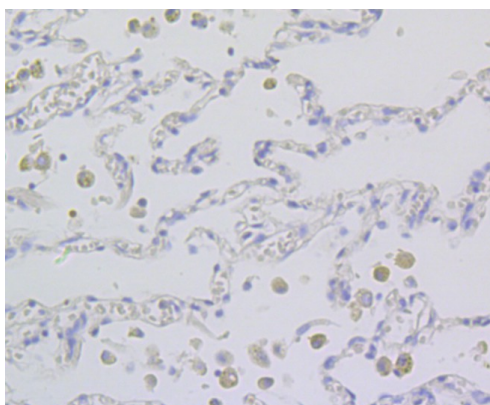


Fig4: Immunohistochemical analysis of paraffin-embedded human lung cancer tissue using anti-TESPA1 antibody. Counter stained with

Fig6: Immunohistochemical analysis of paraffin-embedded mouse pancreas tissue using anti-TESPA1 antibody. Counter stained with

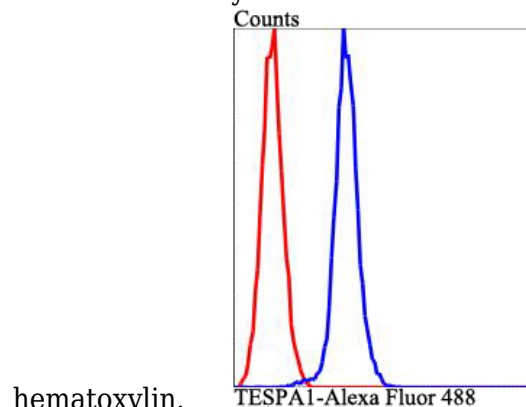
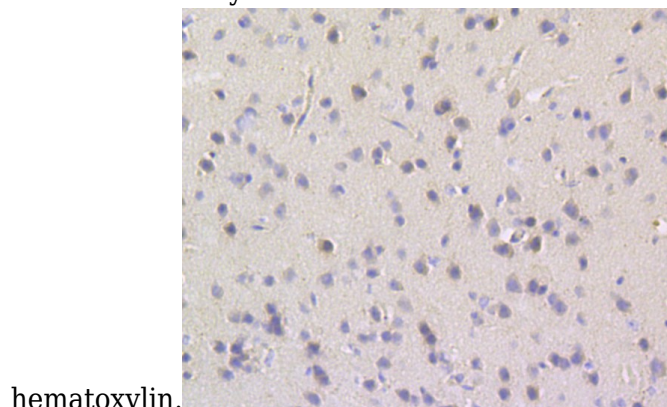


Fig5: Immunohistochemical analysis of paraffin-embedded mouse brain tissue using anti-TESPA1 antibody. Counter stained with hematoxylin.

Fig7: Flow cytometric analysis of HepG2 cells with TESPA1 antibody at 1/100 dilution (blue) compared with an unlabelled control (cells without incubation with primary antibody; red). Alexa Fluor 488-conjugated goat anti-rabbit IgG was used as the secondary antibody.